

# Iverson Road

## West Hampstead, London

We were appointed as landscape architects by a developer client for this new build residential development, located in North London. Our scope was to develop a sketch landscape design for sign off by our client, prepare information to discharge landscape related Planning Conditions, the production of a full tender pack of landscape architect's information, attending regular on site meetings and inspections to the completion of the project.

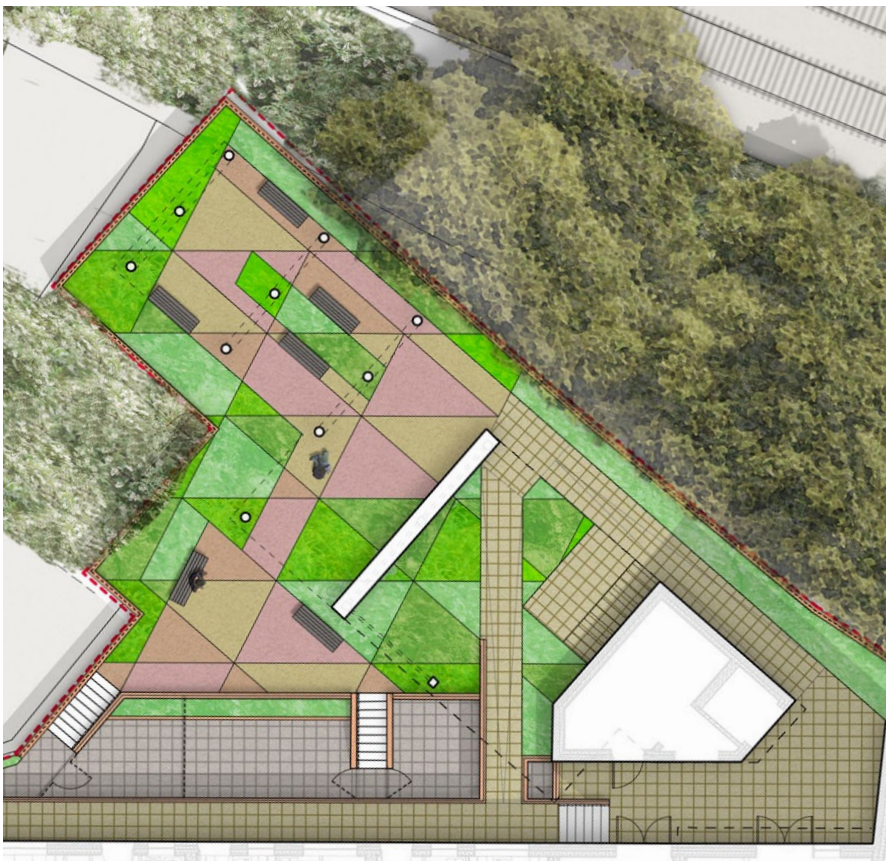
Our landscape architects needed to consider a number of landscape design issues. Firstly, there is a significant level change along the Iverson Road frontage. Secondly, the provision of screening to the adjacent Network Rail land to the north of the site needed to be considered. Finally, the creation of a meaningful courtyard landscape at the heart of this development was critical to the success of this scheme.

A significant part of this central courtyard landscape is located under a triple height undercroft. The growing conditions were therefore carefully considered by our landscape architects to ensure the specified plant material would grow healthily in this location. Where possible our landscape design accommodated private patios to all ground floor units. In addition, there was a requirement that disabled access was required to all ground floor units.

In addition to the standard landscape Conditions, we were responsible for providing detailed information to discharge two Conditions which related to a green wall and a bio-diverse roof. The Local Authority were very specific about the level of detail which needed to be provided to satisfy these Conditions.

Client  
Reichmann Properties

Architect  
Waugh Thistleton Architects



15 Iliffe Yard | London | SE17 3QA | 020 7277 1035 | mail@davisla.com | www.davisla.com

Davis Landscape Architecture Limited  
Registered in England and Wales  
Company Number 7018870.  
VAT Registration Number 979558439

**Landscape  
Institute**  
Registered practice

**Davis**  
Landscape Architecture