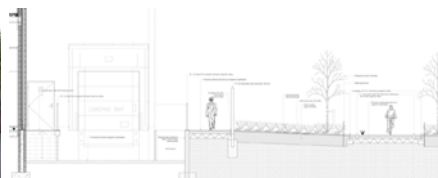
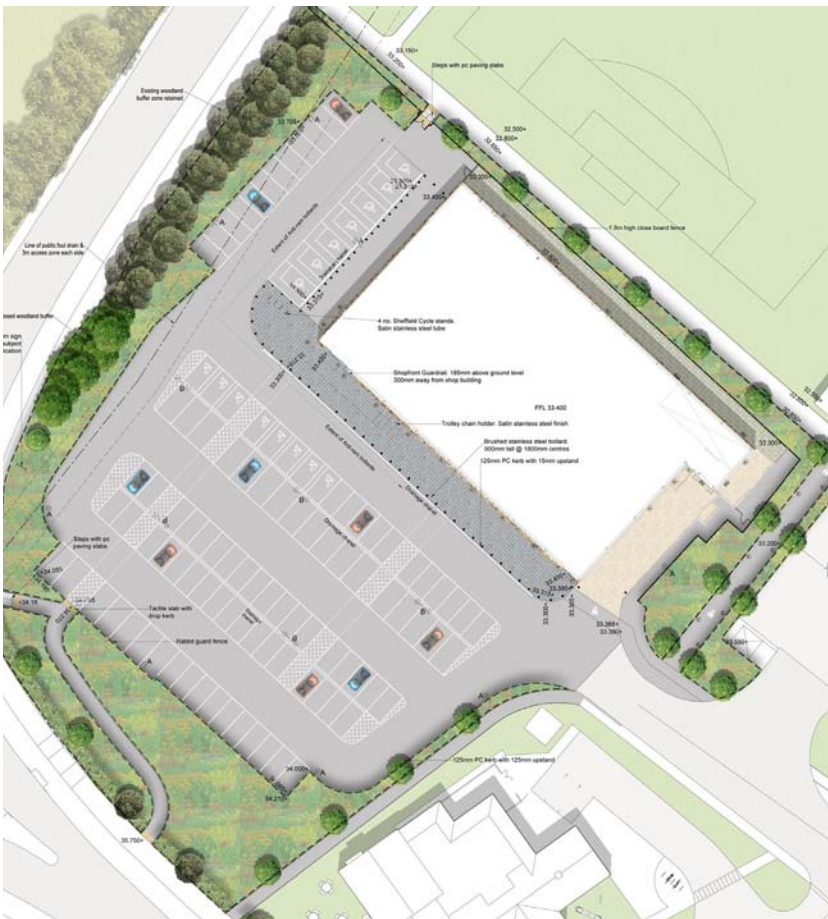


Aldi Store Witham, Essex

We were appointed by our client to provide them with information to satisfy landscape related reserved matters and to provide them with a full landscape package of drawn and written information to enable the tender of the external works for this new build retail store in Essex.

This site already had outline planning consent for a retail development in this location. We worked closely with the architects to arrive at a scheme that satisfied the prescriptive requirements of the local planning department whilst providing the end user with a building and setting that satisfied their needs.

The existing treed edge to the north west corner of the site was particularly sensitive and the planning department were very keen that this should be preserved and extended. The end users required that the site edges should provide views of the store from passing vehicles. A compromise was struck between these two apparently conflicting requirements to the satisfaction of the planners and the end user.



Client
Aldi Stores Ltd

Client representative
Churchmanor Estates Co. Plc.

Architect
BCR Architects

15 Iliffe Yard | London | SE17 3QA | 020 7277 1035 | mail@davisla.com | www.davisla.com

Davis Landscape Architecture Limited
Registered in England and Wales
Company Number 7018870.
VAT Registration Number 979558439

**Landscape
Institute**
Registered practice

Davis
Landscape Architecture