

# The Grove

## Golders Green, London



We were appointed by our client to provide them with information to satisfy landscape related conditions, provide them with a full landscape package of drawn and written information to enable the tender of the external works and to monitor the on site works for this new build residential development.

The entire development for this project is located over a basement car park. Careful consideration was given to the drainage of the paved and planted areas.

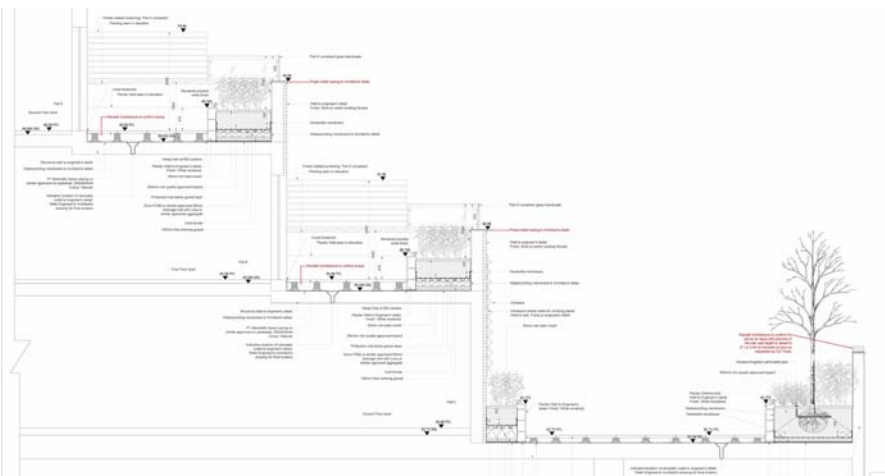
At the first and second floors private terraces are proposed, these contain an area of paving with raised planters and glass balustrade to their perimeter. At the ground floor to the rear of the building a communal private garden is proposed. This is comprised of raised planters with climbers, shrubs and small trees. Within the large planters two vents to the basement car park needed to be accommodated, these were screened with planting. At the lower ground floor level private gardens are proposed for the flats on this level. Where possible climbers were proposed to provide some planing while maximising the usable space for the residents.



The front of this residential development needed to accommodate vehicular access to the lower ground floor car park, the main pedestrian entrance to all flat, covered bin stores and access to various service meters.

**Client**  
CG Towers

**Architect**  
Randall Architecture



15 Iliffe Yard | London | SE17 3QA | 020 7277 1035 | mail@davisla.com | www.davisla.com