

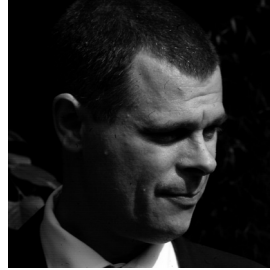
Curriculum Vitae

Justin Davis

Director Landscape Architect

HND Horticulture, BA (Hons), DipLA, CMLI

j.davis@davisla.com



Professional Experience

2009 - Present

Director
Davis Landscape Architecture

2008 - 2009

Senior Associate
Grontmij

2006 - 2007

Associate
Whitelaw Turkington

2004 - 2005

Senior Landscape Architect
Whitelaw Turkington

2003

Landscape Architect
Whitelaw Turkington

2000 - 2002

Landscape Assistant
Whitelaw Turkington

2000

Landscape Assistant
Kinnear Landscape Architects

2000

Landscape Assistant
Churchman Landscape Architect

Education

1999-2000

Landscape Architecture Diploma
Kingston University, London

1996-1998

Landscape Architecture Degree BA
Kingston University, London

1992-1993 & 1995-1996

Horticulture Higher National Diploma
Askham Bryan College, York

15 Iliffe Yard | London | SE17 3QA | 020 7277 1035 | mail@davisla.com | www.davisla.com

Davis Landscape Architecture Limited
Registered in England and Wales
Company Number 7018870.
VAT Registration Number 979558439

**Landscape
Institute**
Registered practice

Davis
Landscape Architecture

Key Projects

Residential

Gascoigne West - Planning 2017

Scope of works: Concept, Outline Planning

Client: LB Barking & Dagenham (Regeneration)

Architect: Fraser Brown MacKenna Architects

Honda Garage Site - Planning 2016

Scope of works: Concept, Planning

Client: Galliard homes

Architect: Barton Willmore

Pieris Place, Bulphan - Complete 2017

Scope of works: Concept, Planning, Conditions, On site

Client: Mizen Design Build

Architect: Osel Architects

Chadwell Street - Planning 2015

Scope of works: Concept, Planning

Client: Galliard homes

Architect: Osel Architects

Details: <http://bit.ly/DavisLACHadwellSt>

St Luke's - Complete 2016

Scope of works: Concept, Planning, Conditions, Tender

Client: Mizen Design Build

Architect: Osel Architects

Details: <http://bit.ly/DavisLASTLukes>

Sarena House, Silkworks - Complete 2017

Scope of works: Conditions, Tender package, Monitor on site works

Client: Galliard homes

Architect: Fleming Maguire Architects

Details: <http://bit.ly/DavisLASilverWorks>

MHT House, Crescent Lane - Complete 2016

Scope of works: Conditions, Tender package, Monitor on site works

Client: Galliard homes

Architect: Osel Architects

Details: <http://bit.ly/DavisLACrescentLa>

Albyn's Close - Planning 2015

Scope of works: Concept, Planning

Client: LB Havering (Regeneration)

Architect: StockWool

Details: <http://bit.ly/DavisAlbynsCI>

Iverson Road - Complete 2016

Scope of works: Concept, Conditions, Tender package, Monitor on site works

Client: Reichmann Properties

Architect: Waugh Thistleton Architects

Details: <http://bit.ly/DavisLAIversonRd>

Finchley Road - Complete 2015

Scope of works: Conditions, Tender

Client: Affinity Sutton

Architect: StockWool Architects

Details: <http://bit.ly/DavisLAFinchleyRd>

Belsize Park - Complete 2015

Scope of works: Concept, Conditions, Tender package

Client: Galliard Homes

Architect: Galliard Homes

Details: <http://bit.ly/DavisLABelsizePk>

Ravenscourt House - Complete 2014

Scope of works: Concept, Planning, Conditions, Tender package, Monitor on site works

Client: South Street Asset Management

Architect: Fraser Brown MacKenna Architects

Details: <http://bit.ly/DavisLARavenscourt>

Star Lane - Submission 2013

Scope of works: Concept, Planning

Client: Inner London Group

Architect: StockWool Architects

Details: <http://bit.ly/DavisLStarLa>

Oxford Stadium - Submission 2013

Scope of works: Concept, Planning

Client: Galliard Homes

Architect: GML Architects

Details: <http://bit.ly/DavisLAOxford>

Tyson Road - On Site 2013

Scope of works: Tender package

Client: Loromah Estates

Architect: Bryden Wood Architects

Details: <http://bit.ly/DavisLATysonRd>

Ruckholt Road - Submission 2009

Scope of works: Concept, Planning

Client: Glyn Hopkins Ltd

Architect: StockWool Architects

Details: <http://bit.ly/DavisLARuckholt>

15 Iliffe Yard | London | SE17 3QA | 020 7277 1035 | mail@davisla.com | www.davisla.com

Davis Landscape Architecture Limited
Registered in England and Wales
Company Number 7018870.
VAT Registration Number 979558439

**Landscape
Institute**
Registered practice

Davis
Landscape Architecture

Key Projects

Infrastructure

Chesterford Research Park - 200 Landscape Works - Complete 2012

Scope of works: Conditions, Tender package, Monitor on site works

Client: Aviva Life and Pensions

Architect: BCR Architects

Chesterford Research Park Sewage

Treatment works - Complete 2006

Scope of works: Planning, Conditions, Tender package, Monitor on site works

Client: Aviva Life and Pensions

Engineer: Hannah Reed Associates

Chesterford Research Park - Park Drive

South - Complete 2004

Scope of works: Planning, Conditions, Tender package, Monitor on site works

Client: Aviva Life and Pensions

Engineer: Hannah Reed Associates

Public Realm

London Wall - Complete 2017

Scope of works: Construction package

Client: Frosts

Architect: MAKE Architects

Vauxhall City Farm - Complete 2017

Scope of works: Conditions, Tender package, Monitor on site works

Client: St James group

Architect: Base Architects

Liverpool Grove - Commission complete 2013

Scope of works: Feasibility

Client: Walworth Society

Details: <http://bit.ly/DavisLiverpoolGr>

Crown Street, Southwark - Submission 2013

Scope of works: Conditions

Client: Parritt Leng

Architect: Parritt Leng

Details: <http://bit.ly/DavisLaCrownSt>

East Village Marketing Suite - Complete 2012

Scope of works: Concept, Planning, Conditions, Tender package

Client: Delancey

Architect: Bryden Wood Architects

Details: <http://bit.ly/DavisLAEastVillage>

Mixed Use

The Oaks - Planning 2013

Scope of works: Planning, Open Space Assessment

Client: Acton regeneration Co. Ltd.

Architect: StockWool Architects

Details: <http://bit.ly/DavisLATheOaks>

Gutenberg - Commission complete 2013

Scope of works: Concept

Client: SPb Renovation

Architect: Bryden Wood

Details: <http://bit.ly/DavisLAGutenberg>

Marine Plaza - Planning 2011

Scope of works: Concept, Planning

Client: Inner London Group

Architect: StockWool Architects

Details: <http://bit.ly/DavisLAMarinePlaza>

Schools

Gordon Infant School - Complete 2017

Scope of works: Conditions, Tender package

Client: Cosmur Construction

Architect: Clayford Design

Stanley School - Complete 2013

Scope of works: Conditions, Tender package, Monitor on site works

Client: Jerram Falkus

Architect: Meadowcroft Griffin Architects

Details: <http://bit.ly/DavisLStanletSch>

Avenue Primary School - Complete 2012

Scope of works: Concept, Planning, Conditions, Tender package, Monitor on site works

Client: Jerram Falkus

Architect: Fraser Brown MacKenna Architects

Details: <http://bit.ly/DavisLAAvenueSch>

15 Iliffe Yard | London | SE17 3QA | 020 7277 1035 | mail@davisla.com | www.davisla.com

Key Projects

Office/ Business/ Research/ Retail Park

Maurice Wilkes Building - Complete 2018
Scope of works: Concept, Planning, Conditions, Tender, On site.
Client: St John College, Cambridge
Architect: BCR Architects
Details: <http://bit.ly/DavisLAMWB>

Chesterford Research Park - 50 - Complete 2016
Scope of works: Planning, Conditions, Tender, On site.
Client: Churchmanor Estates
Architect: BCR Architects

Units 21 & 27 Witham - Complete 2016
Scope of works: Planning.
Client: Churchmanor Estates
Architect: BCR Architects

Century House, Hemel Hempstead - Planning 2015
Scope of works: Conditions
Client: Modus Workshop Ltd.
Architect: Modus Workshop Ltd.

Aldi Store, Witham - Complete 2015
Scope of works: Planning, Conditions, Tender package, Monitor on site works
Client: Churchmanor Estates
Architect: BCR Architects
Details: <http://bit.ly/DavisAldiWitham>

Chesterford Research Park - 600-700 - Complete 2015
Scope of works: Conditions, Tender package, Monitor on site works
Client: Aviva Life and Pensions
Architect: BCR Architects

Hills Road, Cambridge - Complete 2013
Scope of works: Conditions
Client: Daejan (Cambridge)
Architect: BCR Architects
Details: <http://bit.ly/DavisLAHillsRd>

Chelmsford Business Park - L - Complete 2013
Scope of works: Planning, Conditions, Tender package
Client: Churchmanor Estates
Architect: BCR Architects
Details: <http://bit.ly/DavisLACHelmsfordBP>

Chesterford Research Park - 1300 - Complete 2012
Scope of works: Conditions, Tender package, Monitor on site works
Client: Aviva Life and Pensions
Architect: BCR Architects
Details: <http://bit.ly/DavisLAChesterfordSV>

Chelmsford Business Park - K - Complete 2012
Scope of works: Planning, Conditions, Tender package
Client: Churchmanor Estates
Architect: BCR Architects
Details: <http://bit.ly/DavisLACHelmsfordBP>

NIBSC - Ph3 - Complete 2009
Scope of works: Planning, Conditions, Tender package
Client: NIBSC
Architect: Sheppard Robson

Cancer Research UK - Ph3 - Complete 2008
Scope of works: Planning, Conditions, Tender package
Client: Cancer Research UK
Architect: Sheppard Robson

NIBSC - Ph2 - Complete 2007
Scope of works: Planning, Conditions, Tender package
Client: NIBSC
Architect: Sheppard Robson

Hotel

Garlic Hill Hotel - Complete 2017
Scope of works: Tender package, Monitor on site works
Client: FR Holdings
Architect: Dexter Moren Architects

Hotel Neptune - Commission complete 2013
Scope of works: Feasibility study
Client: Hotel Neptune
Details: <http://bit.ly/DavisLAHotelNeptune>

15 Iliffe Yard | London | SE17 3QA | 020 7277 1035 | mail@davisla.com | www.davisla.com