

# Maurice Wilkes Building

## Cambridge, Cambridgeshire

We were appointed by a client's agent to provide landscape architect's information to support a detailed Planning application for this office development located close to the A14, north Cambridge.

The proposed building is located at the south end of an existing business park with a busy primary road to its west. To the west and south plot boundaries numerous existing trees are present. To the west, south and east boundaries existing hedges are present. Running east west, across the south corner of the plot, an over head power cable is in existence.

The proposed built form is square in plan and located at the south west corner of the plot. Our landscape architect's primary task was to accommodate the Local Authority's required number of car and cycle parking spaces within the plot boundary. In addition the boundary treatment was particularly sensitive to the Local Authority and was given careful attention within our landscape design.

A public amenity space for the use of employees is located to the south of the building. This space has been designed so as to accommodate vehicular over run by delivery, fire tender and cleaning vehicles.

Sustainable Urban Drainage Systems (SUDS) is an integral part of the landscape design for this project. A combination of swales between blocks of parking and permeable paving within the parking bays were used to achieve a sustainable drainage design.

### Client

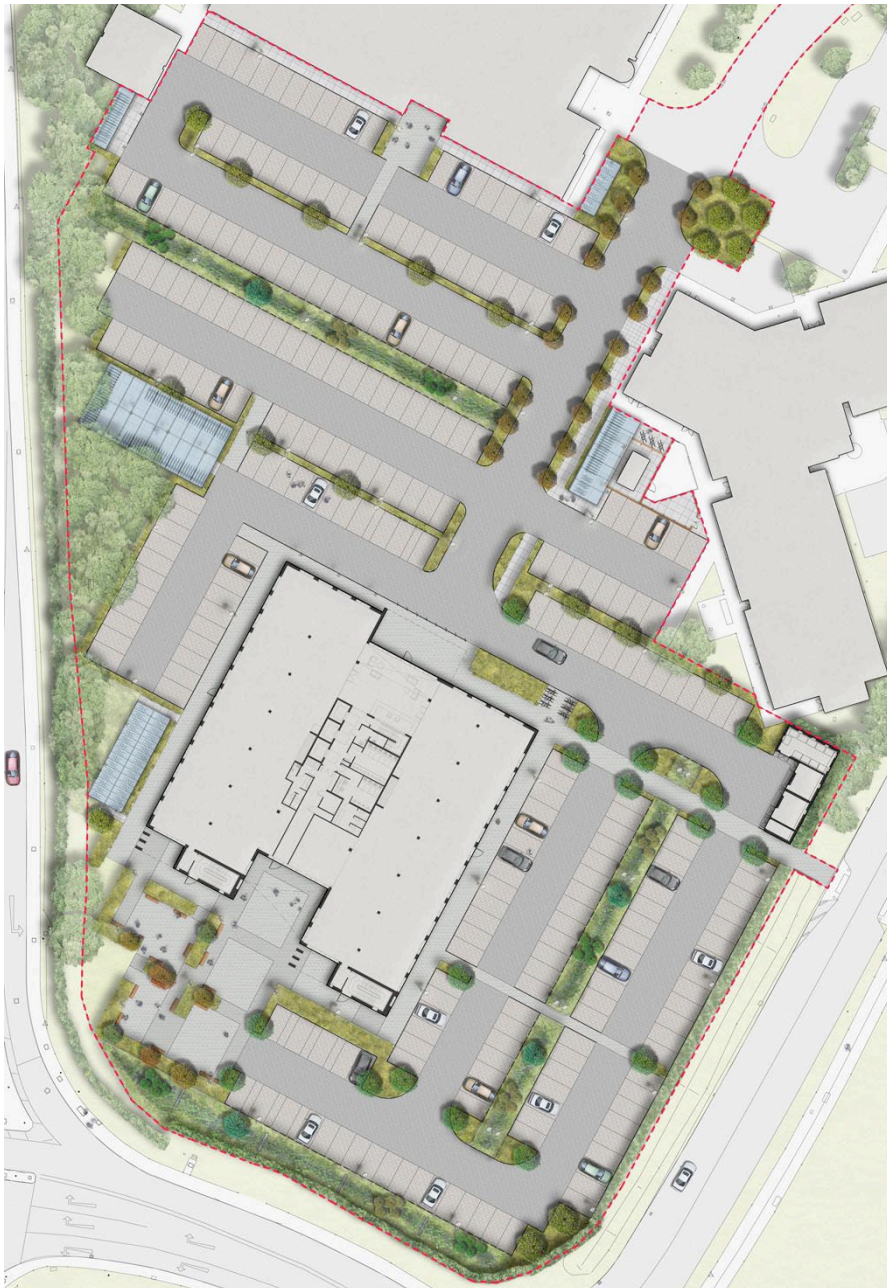
St John's College, Cambridge

### Architect

BCR Architects

### Contractor

Vinci Construction



15 Iliffe Yard | London | SE17 3QA | 020 7277 1035 | mail@davisla.com | www.davisla.com

Davis Landscape Architecture Limited  
Registered in England and Wales  
Company Number 7018870.  
VAT Registration Number 979558439

**Landscape  
Institute**  
Registered practice

**Davis**  
Landscape Architecture