

Former Honda Site Southall, Ealing, London

We were appointed by a developer client as landscape architects on this proposed 10 floor, 174 unit residential development located in north west London. Our scope was to provide coordinated landscape architect's information to support a detailed Planning submission.

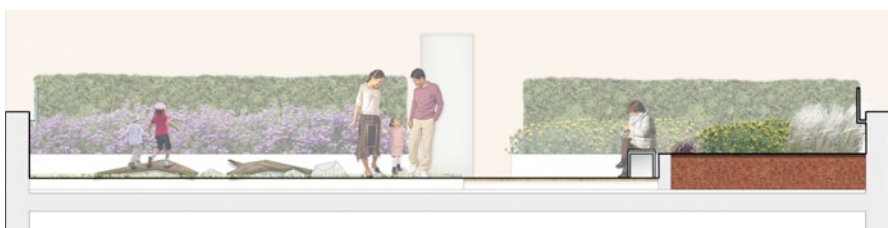
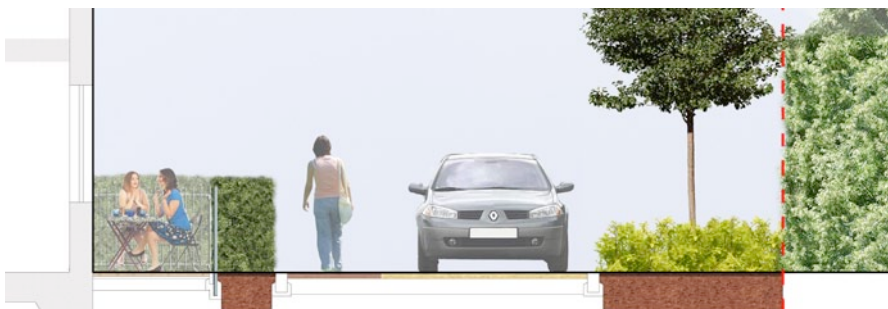
The site is located on a former car showroom and associated car parking area. Along the north east and east boundaries a significant number of medium sized existing trees are located. To the south west corner of the site, between the plot boundary and the public footpath, a number of mature existing trees are located. Within our final proposals all of these trees were to be retained.

We provided landscape proposals for the public and private realm to the ground floor level surrounding the building. A public space has been accommodated at the north west corner of the site. A shared carriageway surface, which provided vehicular access to the site parking and pedestrian access to individual dwellings, is located at the south east corner of the site. All dwellings located at ground floor are accessed from the public realm via a private patio area.

Our landscape proposals for Levels 1, 5, 7 and 8 included the design of shared landscape spaces for the use of all residents and the provision of private patios for all dwellings facing onto these spaces. At levels 1 and 7 under 5's play spaces were incorporated into our landscape design. At Level 1 the venting to the ground floor parking, below this space, needed to be seamlessly accommodated.

Client
Galliard Homes

Architect
Barton Willmore



15 Iliffe Yard | London | SE17 3QA | 020 7277 1035 | mail@davisla.com | www.davisla.com

Davis Landscape Architecture Limited
Registered in England and Wales
Company Number 7018870.
VAT Registration Number 979558439

**Landscape
Institute**
Registered practice

Davis
Landscape Architecture