

Plough Lane Croydon, London

We were appointed by a design and build contractor client as landscape architects on this new build residential development. We were tasked with providing information to submit to the Local Authority to satisfy landscape related Planning Conditions.

The plot contained an existing building which had consent to be demolished and 6 flats to be built in its place. The topography of the site is steeply sloping from the back of the plot to the road frontage. It is bound on three sides by existing housing and has a number of existing trees on the boundary (all of which were to be retained).

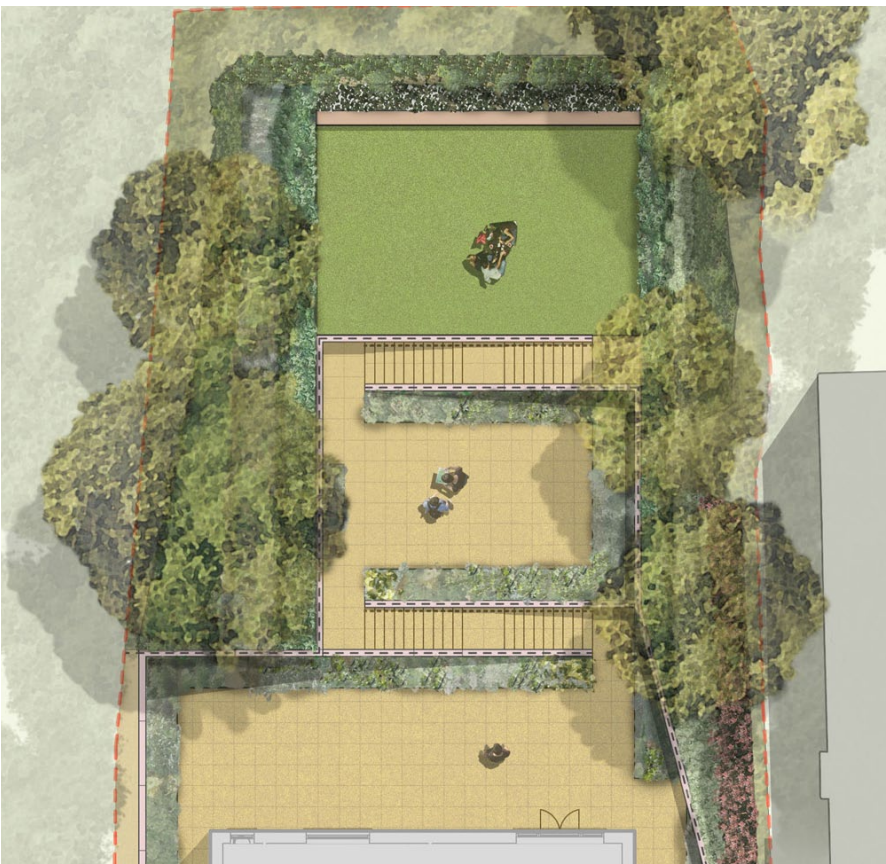
Parking for the proposed new dwellings was to be accommodated within a dedicated open space to the building frontage. A communal garden space was located to the rear of the new building.

Our landscape proposals terraced the rear garden to maximise the usable communal space and to optimise the amount of light entering the building at the lower level to the rear elevation of the proposed building. Strained wires with climbers were proposed on the retaining walls facing the communal spaces. This maximised the scope for ornamental planting to the boundary whilst minimising the loss of usable amenity space.

The soil levels within the root protection areas of the trees to be retained remained unchanged and our proposed layout was carefully considered so as to achieve this.

Client
Harman Enterprise Ltd

Architect
Archipek



15 Iliffe Yard | London | SE17 3QA | 020 7277 1035 | mail@davisla.com | www.davisla.com