

Silver Works Colindale, London

We were appointed by a developer client to reconfigure a consented scheme in order that it may be resubmitted to the local authority for approval. We were then tasked to prepare landscape architects information to satisfy Conditions, produce full tender and construction packages of information to enable the external works to be built and finally to monitor the on site works.

This new build residential scheme is located on a brown field site of a former factory. There were no existing trees on site and the plot was considered to be of low ecological value by our ecological consultant.

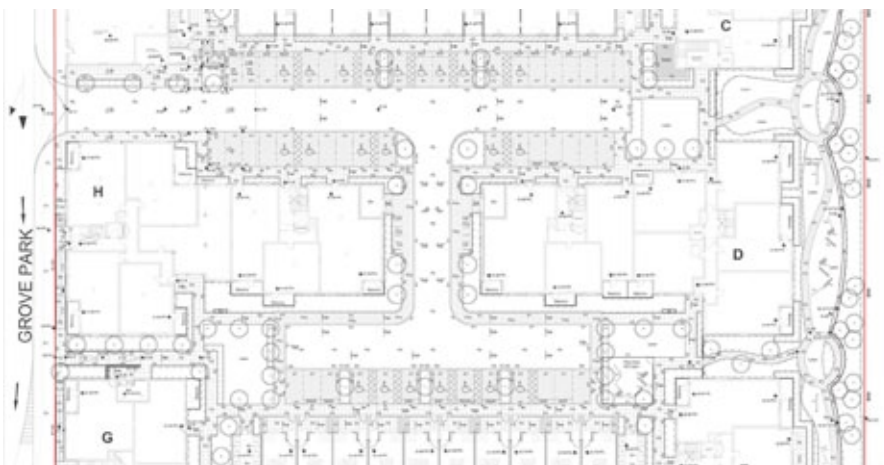
Contamination, surface water drainage, existing levels and the interface at the plot boundary all needed to be considered as part of the design process. The access and circulation of fire tender, refuse and delivery vehicles were accommodated within our carriageway design.

Part of the car parking for the site is located under the north residential block and carriageway. In this location the entire landscape design is located over a podium deck and has been detailed accordingly.

The site has been designed as a 'Home Zone' with shared surfaces throughout. A dedicated under 5's play area has been incorporated into the public realm landscape and a linear park has been located to the rear of the development.

Client
Galliard Homes

Architect
Fleming Maguire Architects



15 Iliffe Yard | London | SE17 3QA | 020 7277 1035 | mail@davisla.com | www.davisla.com