

Watts Grove

Poplar, Tower Hamlets
London

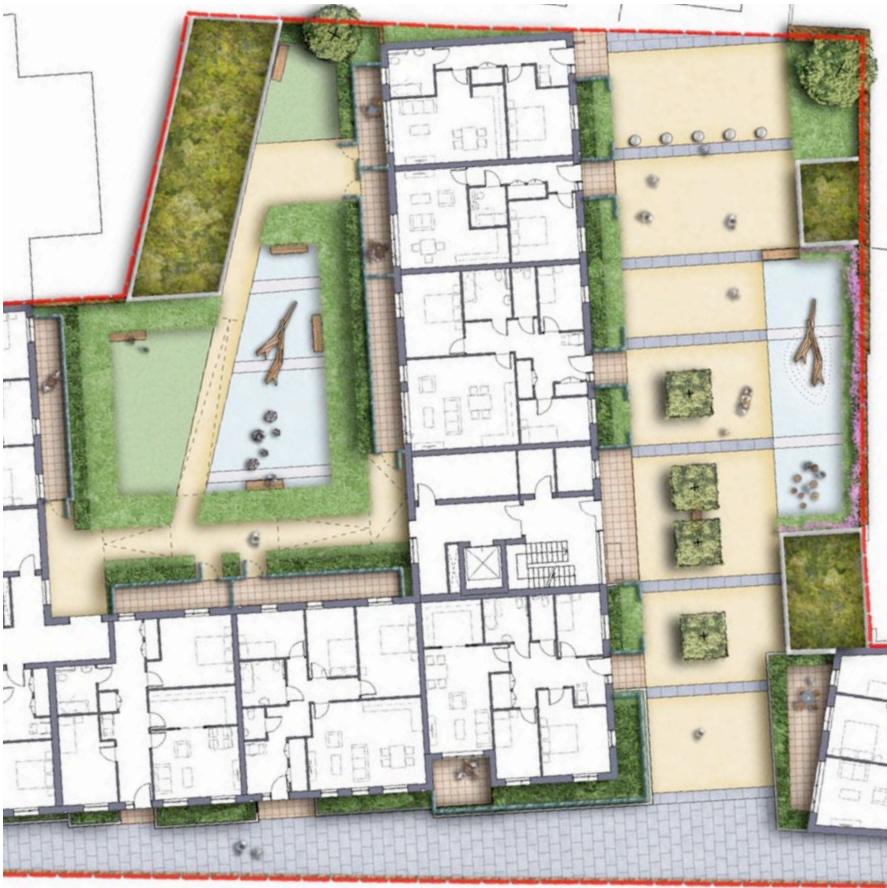
We were appointed by our housing association client to provide them with supporting landscape architect's information to enable the submission of a detailed planning submission for this residential development on this brownfield site in east London.

The landscape design for this project was focused on three main areas; a private courtyard space at the heart of the scheme; a north/south semi public space; and a connecting public path to the south plot boundary.

The courtyard has been designed to allow the flow of residents through this space as well as an area in which to stop and relax. A number of private gardens, a play area and an area of lawn have all been accommodated within this courtyard space.

As well as providing a pedestrian route through this proposed development, the north/south space provides pedestrian entrances to the residential units fronting onto this zone of public realm. A play area has been incorporated into this pedestrian zone, this will encourage opportunities for door step play.

The brief for the south public footpath was to provide some defensible space between the ground floor units and members of the public. This was achieved by proposing a simple buffer strip of thorny planting.



Client
Swan Housing

Architect
StockWool

15 Iliffe Yard | London | SE17 3QA | 020 7277 1035 | mail@davisla.com | www.davisla.com

Davis Landscape Architecture Limited
Registered in England and Wales
Company Number 7018870.
VAT Registration Number 979558439

**Landscape
Institute**
Registered practice

Davis
Landscape Architecture