

## MHT, Crescent Lane Clapham, Lambeth, London

We were appointed by a developer client to provide information to satisfy landscape related conditions for this refurbished building. We were then tasked to produce full Landscape Architect's tender and construction packages of information to enable the external works to be built. Finally, we were appointed to monitor the on site works.

The entire landscape zone surrounding this existing building needed to be completely reconfigured so as to accommodate necessary off road parking, private gardens, shared amenity space, an under 5's children's play ground, a footpath network and storage for cycles and bins. Within the landscape zone a number of existing trees needed to be retained. The detailing of these trees at ground level was carefully considered so as to minimise the detrimental impact of ground works and general building on their health.

Our landscape design retained the existing boundary wall and gates to Crescent Lane in their original position. For everyday use, separate gates open for pedestrian and car access. However, when refuse vehicle or fire tender access is required both gates will open. The pedestrian surface (which is flush with the carriageway) then functions as a vehicle over run.

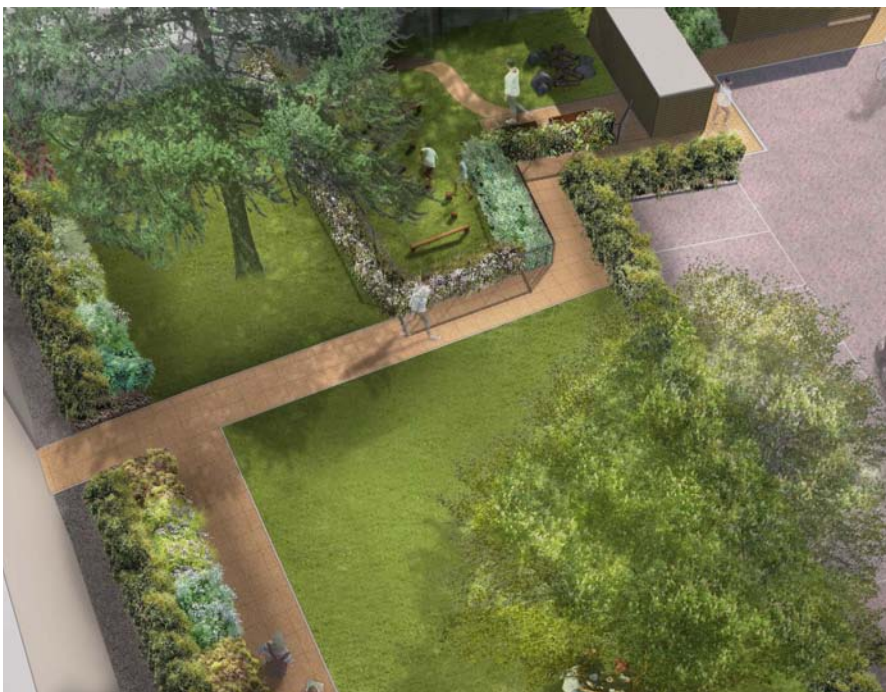
Careful consideration was given to the north west corner of the site as these two private gardens are at lower ground floor level. It was critical that adequate light could enter these spaces and adjacent dwellings.

### Client

Galliard Homes

### Architect

Osel Architecture



15 Iliffe Yard | London | SE17 3QA | 020 7277 1035 | mail@davisla.com | www.davisla.com