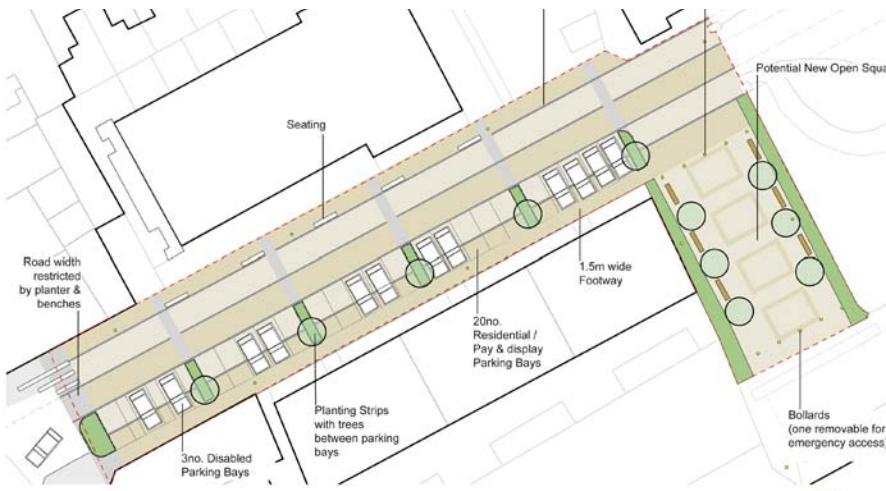
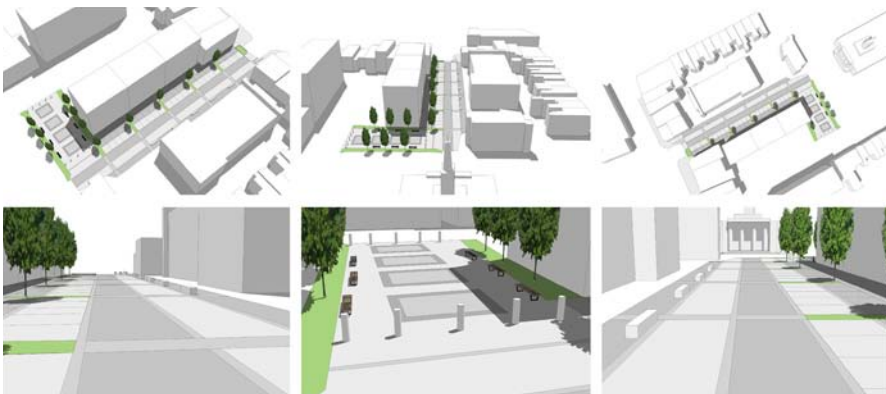


Liverpool Grove Walworth, London



We offered our services to the Walworth Society to analyse whether Liverpool Grove would be a suitable road to adopt the principals of shared space. Our analysis considered it was suitable, we then proceeded to develop a proposal to this end.

At the end of the street a Grade 1 listed church is located. As the street has a wide building to building frontage the introduction of trees was possible whilst retaining the attractive vista of the church. Due to the street not being a through route to motor vehicles we concluded it to be suitable for a shared space due to the very low volumes of slow moving traffic.

Our proposals suggest transforming this space from a residential road to a linear square. To achieve this the existing parking layout was rearranged to accompany the introduction of trees and street furniture as well as a new building front to building front paving surface

Our proposals were then used for presentations to the relevant interested parties of this space and were used to generate further discussion.

Client
Walworth Society

15 Iliffe Yard | London | SE17 3QA | 020 7277 1035 | mail@davisla.com | www.davisla.com

Davis Landscape Architecture Limited
Registered in England and Wales
Company Number 7018870.
VAT Registration Number 979558439

**Landscape
Institute**
Registered practice

Davis
Landscape Architecture