

Belsize Park Camden, London

We were appointed as landscape architects for this residential development located in north London. Our scope of works was from preparing information to discharge landscape related conditions to the preparation of a full tender pack of information.

The proposed buildings are replacing four existing houses in a terrace located within a Conservation area. Additional parking is located under the proposed house and under the proposed gardens. Within the envelope of the gardens there is a step in the basement slab which needed to be accommodated within the landscape design.

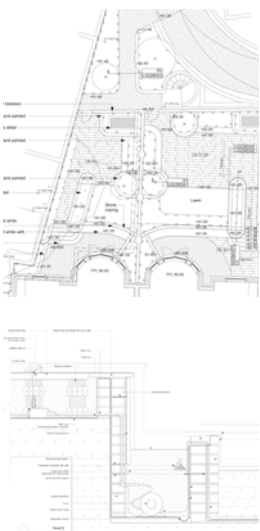
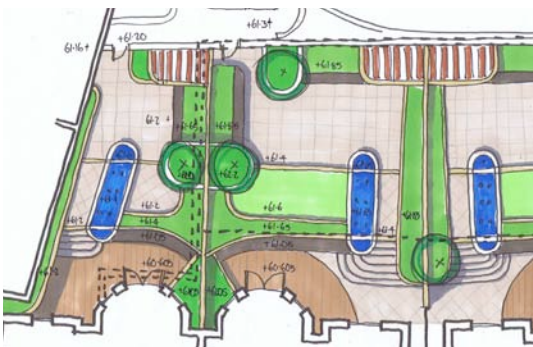
Our brief for the rear gardens was to maximise the usable space, provide a housing for mechanical plant associated with the individual houses and to provide the end user with a high quality pleasant and flexible space.

The front gardens needed to provide a suitable means of access to the dwellings whilst providing space and access to the bin stores. The planting and paving needed to be suitable for an area of this architectural quality.

Finally we needed to resolve vehicular access requirements to the basement car park at the rear of the dwellings. This access also needed to accommodate occasional pedestrian access to two of the four rear gardens.

Client
Galliard Homes

Architect
Galliard Homes



15 Iliffe Yard | London | SE17 3QA | 020 7277 1035 | mail@davisla.com | www.davisla.com

Davis Landscape Architecture Limited
Registered in England and Wales
Company Number 7018870.
VAT Registration Number 979558439

**Landscape
Institute**
Registered practice

Davis
Landscape Architecture