

Finchley Road Finchley, London

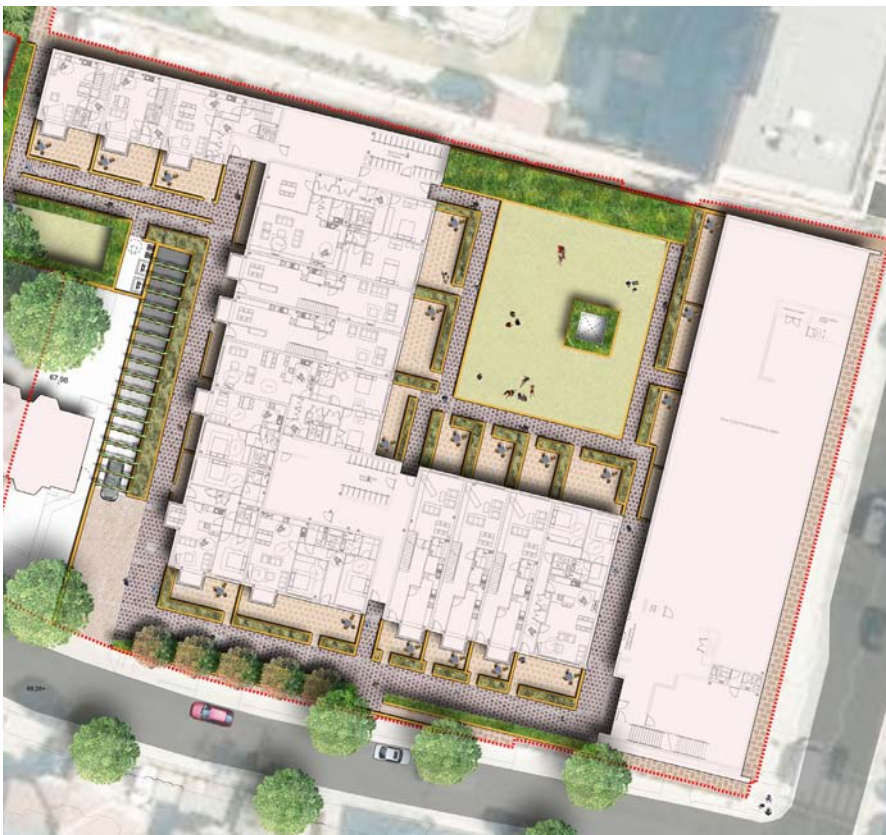


We were appointed by the architect to develop a planning approved scheme and to provide them with information to discharge all landscape related conditions for this mixed use development located in west London. In addition our remit was to provide a full tender pack of information to enable the tender of the soft landscape element of works.



Our proposals needed to consider the entire courtyard space and frontage to the residential block to the south which are both located over a podium deck. Our proposals also need to carefully address the flat landscape to the south of the south building block and the sloping footway of Llanvanor Road.

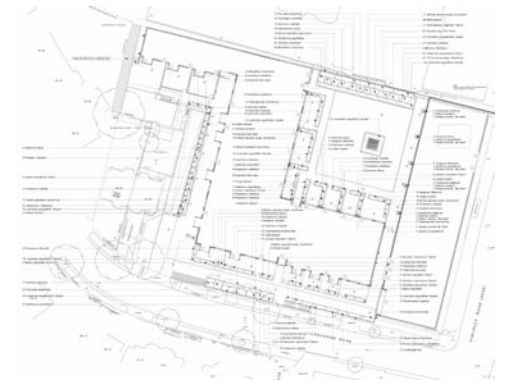
The planting scheme needed to consider the potentially stressed environment in which these plants are expected to grow. Both shading from the surrounding proposed building and the limited growing medium over the podium deck were considered.



The courtyard faces of the building elevations were to be greened with planting. Significant design consideration was given to this important element of our proposals.

Developer
Affinity Sutton

Architect
StockWool



15 Iliffe Yard | London | SE17 3QA | 020 7277 1035 | mail@davisla.com | www.davisla.com

Davis Landscape Architecture Limited
Registered in England and Wales
Company Number 7018870.
VAT Registration Number 979558439

**Landscape
Institute**
Registered practice

Davis
Landscape Architecture