

# Shahid Joad - Curriculum Vitae

Senior Landscape Architect - MLA, B'Arch, ISOLA (India), COA (India)

## Professional Experience

2013 - Present - Senior Landscape Architect - Davis Landscape Architecture, London  
2007 - 2013 - Landscape Architect - Whitelaw Turkington / Grontmij, London  
2006 - 2007 - Landscape Architect - Rummey Design Associates, London  
2006 - Assistant Landscape Architect - Glenn Howells Architects, London  
2005 - 2006 - Landscape Assistant - Locodrom Landschaftsarchitekten, Berlin, Germany  
2005 - Landscape Architect - CIP Group Ltd  
2004-2005 - Landscape Architect - Stock + Partner, Jena, Germany  
2000-2003 - Architect - Shariff & Associates, Bangalore, India

## Education

2003-2004 - Master in Landscape Architecture - Anhalt University, Germany  
1997-2000 - Bachelor in Architecture - Madras University, India

## Key Projects

### Westbury Estate, Clapham, Lambeth

**Complete:** 2019

**Scope:** Tender, On site

**Client:** St James Group

**Architect:** BM3 Architects

The preparation of full tender/ construction packages of information for three brownfield plots that total 0.38ha. Two plots contain residential developments and the remaining plot to be a public playground. Constraints included, a fall of 2m from Wandsworth Road to the rear of two of the plots, a number existing trees to be retained and contamination.

[Click Image to See More](#)



### RHDA, Colindale, Barnet

**Complete:** 2019

**Scope:** Tender, On site

**Client:** Mace Construction

**Architect:** Bryden Wood

A 2.08ha brownfield site that is to contain a dedicated training facility for the Metropolitan Police. Constraints include Underground and a Network Rail lines adjacent to two plot edges, a significant belt of existing trees to two plot edges, a fall of 4.5 across the site and minimising fill to export off site. Proposal included pedestrian circulation, parking and access.



### Marine Wharf East, Lewisham

**Complete:** 2018

**Scope:** Construction Information

**Client:** Galliard Homes

**Architect:** Galliard Homes

A 1.02ha, 225 residential unit development, consisting of two blocks with courtyard spaces located over podium deck slabs, one with play. Between the blocks a new home zone space built to Highways adoptable standards provided a new street and access to the car parking. An associate 106 Agreement included improvement works to adjacent public open space.



### Silver Works, Collindale

**Complete:** 2018

**Scope:** Conditions, Tender, On site

**Client:** Galliard homes

**Architect:** Fleming Maguire Architects

A 1.15ha new development with 227 residential units and 256m2 affordable work space. Challenges included contaminated land and party walls. Our proposals included pedestrian circulation, a home zone with above ground car parking and a linear park with incidental pieces of play equipment. Part of the landscape zone is located over a basement car park.



### London Wall Place, Moorgate

**Complete:** 2018

**Scope:** Construction information

**Client:** Frosts

**Architect:** MAKE Architects

A high profile new build office development located in the City of London with extensive public realm. We were appointed by the principal external works contractor to provide them with detailed Construction packages of information to enable the construction of specific external works elements. All elements were detailed to a high tolerance.



### Pieris Place, Bulphan

**Complete:** 2018

**Scope:** Concept, Planning, Tender, On site

**Client:** Mizen Design Build

**Architect:** Osel Architects

A 2.8ha high quality residential development, with detached dwellings, located within Green Belt. Constraints included existing hedging and trees to the perimeter of the site all of which needed to be retained. Our proposals minimised the volume of fill being removed from site. Our proposals incorporated SUDS, shared surfaces and a Wayleave.



15 Iliffe Yard | London | SE17 3QA | 020 7277 1035 | mail@davisla.com | www.davisla.com

Davis Landscape Architecture Limited  
Registered in England and Wales  
Company Number 7018870.  
VAT Registration Number 979558439

**Landscape  
Institute**  
Registered practice

**Davis**  
Landscape Architecture



## Key Projects

[Click Image to See More](#)

### **Maurice Wilkes Building, Cambridge**

**Complete:** 2018

**Scope:** Planning, Tender, On site

**Client:** St John College, Cambridge

**Architect:** BCR Architects

A new 6,200sqm office building on a 1.48ha plot within an existing business park. Constraints included existing trees and hedges to the perimeter of the plot. Responsible for all external works including amenity space, SUDS detailing (permeable paving and swales), car parking, pedestrian network and overrun/shared surfaces. BREEAM very good.



### **Park Grove, Acton**

**Complete:** 2016

**Scope:** Conditions, Tender package

**Client:** Mizen Design Build

**Architect:** StockWool Architects

The preparation of a detailed package of information for this 0.23ha new build residential development. Constraints included part of the landscape zone located over a structural slab, car parking ventilation accommodated within the landscape zone, Party Wall agreements. Tree planting to Park Road helped to reduce the visual mass of the building.



### **St Luke's, Canning Town**

**Complete:** 2016

**Scope:** Concept, Planning, Conditions, Tender

**Client:** Mizen Design Build

**Architect:** Osel Architects

We were responsible for developing the landscape design to the courtyard space and external envelope to this refurbished residential development on a 0.5ha plot. Constraints included the courtyard space being located over a structural slab, the interface between existing finished floor & landscape levels and overlooking issues to the plot's perimeter.



### **Units 21 & 27 Witham**

**Complete:** 2016

**Scope:** Planning

**Client:** Churchmanor Estates

**Architect:** BCR Architects

Two new build commercial units on a 0.33ha plot of green field land at the edge of Witham. Information provided to support the Detailed Planning submission included circulation routes, car parking, service access, structural planting and boundary treatments. Tree planting was carefully considered to help minimise the visual impact of the proposed development.



### **Highbury Grove, Islington**

**Complete:** 2015

**Scope:** Conditions

**Client:** Nobel House Properties

**Architect:** GPad

A 0.13ha new build & refurbished residential development with one commercial unit. Constraints included existing trees, a significant level change (with stepped building FFLs) and an existing vehicular route within the plot boundary. The landscape zone included rear and front gardens, pedestrian circulation, a shared surface.



### **Wapping Riverside, Tower Hamlets**

**Complete:** 2015

**Scope:** Conditions, Tender

**Client:** C. J. O'Shea

**Architect:** Galliard Homes

The preparation of a detailed package of information for this 0.11ha residential development. The existing building was converted to residential and extended upwards to 7 floors. Our remit was the landscape design of the roof garden area. Constraints included an existing building structure to accommodate a proposed roof garden and climatic conditions.



### **Aldi Store, Witham**

**Complete:** 2015

**Scope:** Planning, Tender, On site

**Client:** Churchmanor Estates

**Architect:** BCR Architects

**Contractor:** Rose Builders

A new build Aldi store on a 0.85ha plot of green field land with outline planning consent at the edge of Witham. Our landscape proposals specified the circulation routes, car parking, service access and boundary treatments. The existing hedging and trees to two of the plot edges were sensitive to the Local Authority and their healthy retention was critical.



### **The Grove, Barnet**

**Complete:** 2014

**Scope:** Conditions, Tender, On site

**Client:** CG Towers Ltd

**Architect:** Randall Architecture

The preparation of a detailed package of information for this 900msq residential development built on brownfield land. Constraints included the landscape zone located on a structural slab at every level and venting to the basement car park accommodated within the landscape zone. Private gardens to Levels 0, 1 & 2 and a communal garden at Level 0.



15 Iliffe Yard | London | SE17 3QA | 020 7277 1035 | [mail@davisla.com](mailto:mail@davisla.com) | [www.davisla.com](http://www.davisla.com)

Davis Landscape Architecture Limited  
Registered in England and Wales  
Company Number 7018870.  
VAT Registration Number 979558439

**Landscape  
Institute**  
Registered practice

**Davis**  
Landscape Architecture



## Key Projects

### Clyde Circus, Haringey

**Complete:** 2014

**Scope:** Tender package

**Client:** Freeds Developments

**Architect:** Genesis Architecture

An 800msq new build residential development accessed by a narrow alley way, on a brownfield site and bound on all sides by Part Walls. Constraints included existing trees to the perimeter and access requirements. The landscape zone included rear and front gardens and a permeable paved surface to the 'Home Zone' area to the building frontage.

[Click Image to See More](#)



### Tudor Court, Barnet

**Complete:** 2014

**Scope:** Conditions, Tender, On site

**Client:** CG Towers Ltd

**Architect:** Randall Architecture

The preparation of a detailed package of information for this 0.25ha development consisting of converting an existing building to residential. Constraints included existing trees to the plot boundary, site accessed via a communal carriageway and retaining existing tarmac. Landscape zone included parking and garden for each unit and 'Home Zone' principals.



### Tyson Road, Lewisham

**Complete:** 2013

**Scope:** Conditions, Tender

**Client:** Loromah Estates

**Architect:** Bryden Wood Architects

An 0.89ha residential development comprising of nine stand alone blocks with undercroft parking. The existing site contains a significant number of trees, many of which were protected by TPOs & a fall of 10m. Our proposals included shared space, communal gardens and Part M compliance.



### 213 - 217 Bow Road, Tower Hamlets

**Complete:** 2013

**Scope:** Planning, Conditions

**Client:** Aitch Group

**Architect:** StockWool Architects

We were responsible for developing the landscape design this 0.14ha residential development built on brownfield plot. Constraints included a deep plot with Party Walls to the majority of the perimeter. Our landscape zone accommodated a disabled car parking space, a toddlers playground and share amenity. All pedestrian areas allowed for vehicular overrun.



### Stanley Primary School, Teddington

**Complete:** 2013

**Scope:** Conditions, Tender, On site

**Client:** Jerram Falkus

**Architect:** Meadowcroft Griffin Architects

We were responsible for developing the landscape design for this refurbished school located on a 1.04ha site in Teddington, west London. The project included extending the existing school buildings and improving the existing play provision for the children, while maximising the space available. Constraints included existing trees and ensuring the school remained open.



### European Bioinformatics Institute

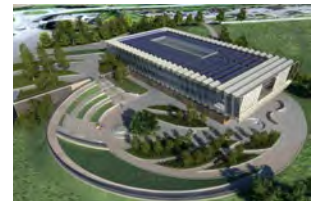
**Complete:** 2013

**Scope:** Planning, Tender, On site

**Client:** Willmott Dixon

**Architect:** BCR Architects

A new 5000sqm Wellcome Genome Trust campus extension. The high quality paving to the new landscape fronting the building creates a striking new amphitheatre with a raised stage and natural stone seating. The proposals contain extensive planting including native mature tree and wildflower planting.



### Kingsland Wharves

**Complete:** 2013

**Scope:** Planning, Tender, On site

**Client:** London & Quadrant

**Architect:** JCMT Architects

A new residential development comprising of nine blocks set in a stunning canal side setting. Landscape design included flexible public spaces, shared courtyard spaces, a new wetland. Native planting and bat friendly lighting was specified throughout the scheme. Existing site contains included Regent's Canal, a public right of way and existing site levels.



### Blackpool Central Business District

**Complete:** 2013

**Scope:** Planning, Tender, On site

**Client:** Muse Developments

**Architect:** Aedas & LRW Architects

New public realm for the landscape surrounding the redevelopment of Blackpool North train station which was to include new retail and office developments. The landscape design intended to integrate Talbot Gateway into the existing urban fabric, creating a safe and attractive environment for pedestrians, cyclists and vehicles.



15 Iliffe Yard | London | SE17 3QA | 020 7277 1035 | [mail@davisla.com](mailto:mail@davisla.com) | [www.davisla.com](http://www.davisla.com)

## Key Projects

### Cardinal Wiseman Secondary School

**Complete:** 2013

**Scope:** Planning, Tender, On site

**Client:** Balfour Beatty

**Architect:** JM Architects

A refurbished and extended school built under Ealing's Building Schools for the Future programme, designed to accommodate 2000 students. The site was extremely constrained and contained a 10m wide wayleave running through its centre. The landscape design consisted of a series of attractive outdoor spaces. Phasing of the development was considered.



### East Berkshire School

**Complete:** 2013

**Scope:** Planning, Tender, On site

**Client:** Fusion Project Management & Kier

**Architect:** Bond Bryan Architects

A refurbished and extended college which was to accommodate a new sports hall and hospitality suite. The landscape design incorporated a front entrance courtyard, an internal street and a reconfigured parking layout. A clear wayfinding strategy was developed and considered strategic views, paving materials and lighting.



### Skinner's Kent Academy

**Complete:** 2013

**Scope:** Concept, Planning, Tender, On site, LVIA

**Client:** Willmott Dixon

**Architect:** Hunter Architects

A refurbished and extended school built under Kent Academies programme and located at the edge of Green Belt. Phasing of the development was considered. Landscape design elements included, play grounds, sports pitches, car parking, pedestrian circulation. Existing constraints included a level change in excess of 5m across the site and mature trees to be retained.



### Mill Farm Close

**Complete:** 2012

**Scope:** Concept, Planning, Tender

**Client:** Higgins

**Architect:** Pollard Thomas Edwards Architects

The regeneration of an existing housing estate by the demolition of the existing building and the creation of 165 homes. The integration of the new proposals into the existing site context was considered important. Landscape design elements included distinct character zones, 'home zones', a 'village green', play areas, biodiverse swales and permeable paving.



### First Central, Royal Park

**Complete:** 2011

**Scope:** Concept, Planning, LVIA

**Client:** Catalyst Homes

**Architect:** Sheppard Robson

The provision of a landscape masterplan which introduces residential and additional office space into an existing office park. The proposed landscape design intended to seamlessly tie into the existing established park setting. Each of the proposed residential blocks contain a 'homezone' type landscape design and provide access for pedestrians and vehicles.



### Edgbaston Mill, Birmingham

**Complete:** 2010

**Scope:** Concept, Planning, Tender, On site

**Client:** Calthorpe Estates

**Architect:** Crouch Butler Architects

A mixed use development including commercial buildings, a residential block and a new public square. The landscape design creates a series of high quality external spaces. The public square is designed as a flexible space and contains a water feature. Shared surfaces were an integral part of the design.



### Stonebridge Hillside Hub

**Complete:** 2010

**Scope:** Concept, Planning, Tender, On site

**Client:** Rydon

**Architect:** Cullinan Studio

This mixed use development includes a primary care trust facility, a community centre, retail units and residential flats. The landscape design elements include a public plaza entrance area, an enclosed community garden for the users of the hub and car parking. This project has won a number of prestigious awards.



### Wivenhoe Park Hotel

**Complete:** 2010

**Scope:** Concept, Planning

**Client:** The Edge

**Architect:** Bond Bryan Architects

The creation of a refurbished historic garden for the use of the adjacent hotel. The landscape design elements include a formal sunken lawn, appropriate planting styles, an external seating area for the bistro and a raised herb garden. Existing site constraints included Historic England protection to a number of elements and existing trees to be retained.



15 Iliffe Yard | London | SE17 3QA | 020 7277 1035 | mail@davisla.com | www.davisla.com



## Key Projects

### Loxford School of Science & Technology

**Complete:** 2010

**Scope:** Planning, Tender, On site

**Client:** Willmott Dixon

**Architect:** Aedas Architects

A refurbished and extended secondary school built under Building Schools for the Future Pathfinder 1 scheme, designed to accommodate 2,000 students. The phasing of the build was considered as the school needed to remain open for the duration of the build programme. A considered landscape design helped to reduce build cost associated with contaminated soil.



### Yas Island, Abu Dhabi

**Complete:** 2009

**Scope:** Concept, Planning, Tender

**Client:** Aldar Properties

**Architect:** Aukett Fitzroy Robinson

The design of the external environment for a holiday resort. The landscape design elements included pedestrian circulation, swimming pools, water features, restaurant areas and sports facilities. The design combined contemporary and vernacular architectural styles and treated the external environment as a series of distinct spaces through which guests could pass.



### Al Kufra, Libya

**Complete:** 2008

**Scope:** Concept, Planning

**Client:** Al Wahat

**Architect:** Camillin Denny

The design of the external environment for a holiday resort and spa hotel. The landscape design elements included garden spaces, swimming pools, water features and restaurant areas. The design combined contemporary and vernacular architectural styles and integrated fragments of wall from an earlier village settlement.



### Dartford Leisure Centre

**Complete:** 2008

**Scope:** Concept, Planning, LVIA

**Client:** Dartford Borough Council

**Architect:** KSS Group

A new public swimming pool and sports building within Central Park, Dartford as part of the town's wider regeneration. The landscape design manipulated the existing ground form and proposed new avenues of trees to help to provide a suitable setting for this new building. Numerous existing trees needed to be considered as part of the landscape design.

