

Summit Court Kilburn, Brent, London

We were appointed by the development arm of a Local Authority to prepare a landscape design to satisfy landscape related conditions for this proposed residential development located within an existing Local Authority owned housing estate. We were then tasked with the production of fully coordinated Tender landscape package of information.

Following this we were appointed by the main contractor to develop our proposals and tasked with the preparation of our Construction status landscape package of information. We were also required to monitor the on site works as they progressed.

The proposed building plot is located within the footprint of a block of underused storage facilities and an area of tarmac. In addition to the building landscape we were also tasked with the preparation of proposals for associated car parking which was to serve both the existing and new residents of this estate.

The existing trees to the west of the proposed building, within the vicinity of the reconfigured car parking area were to be retained. This was a Local Authority requirement, and specific details were required to satisfy one of the Planning Conditions to this end.

Our landscape proposal suggested that the area of underused grass between the existing and proposed buildings should be reconfigured so as to create an attractive amenity space which incorporated elements of informal play. These included balancing logs, boulders, planting, benches and contoured landform. To the south west of the new building a second, smaller play area was incorporated.

Client

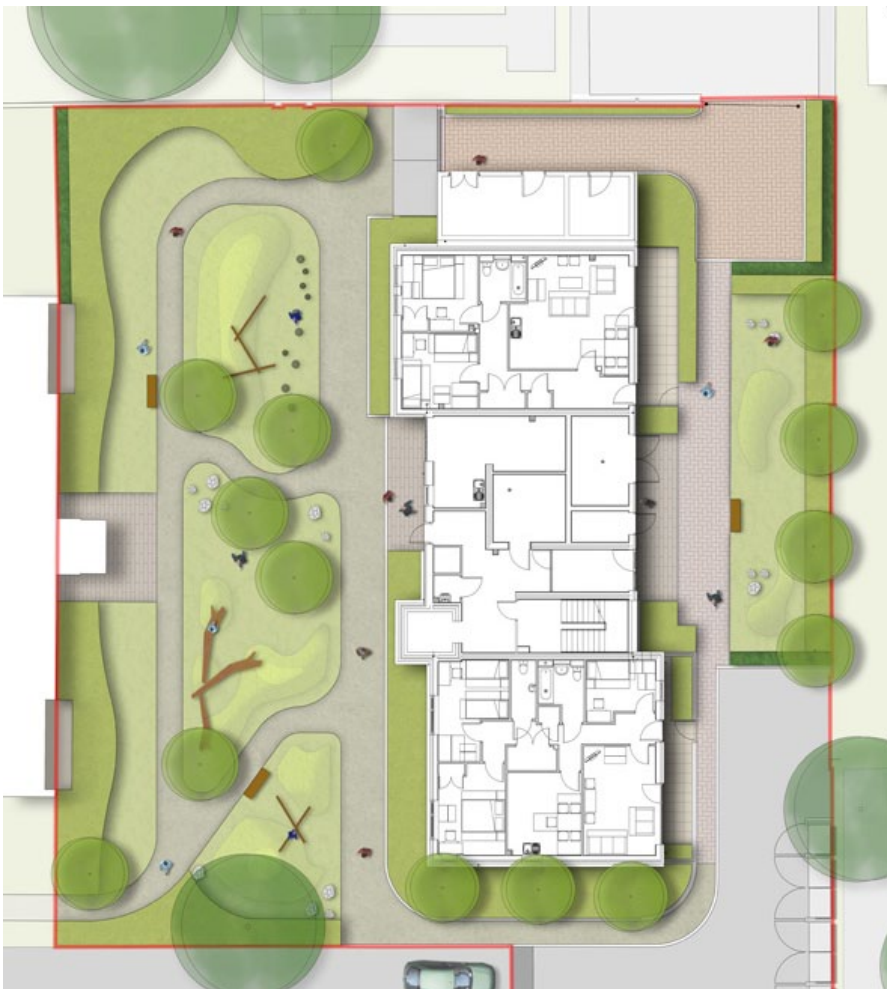
Brent Partnership

Architect

Baily Garner

Contractor

Thomas Sinden



15 Iliffe Yard | London | SE17 3QA | 020 7277 1035 | mail@davisla.com | www.davisla.com

Davis Landscape Architecture Limited
Registered in England and Wales
Company Number 7018870.
VAT Registration Number 979558439

**Landscape
Institute**
Registered practice

Davis
Landscape Architecture