

Vauxhall City Farm Lambeth, London

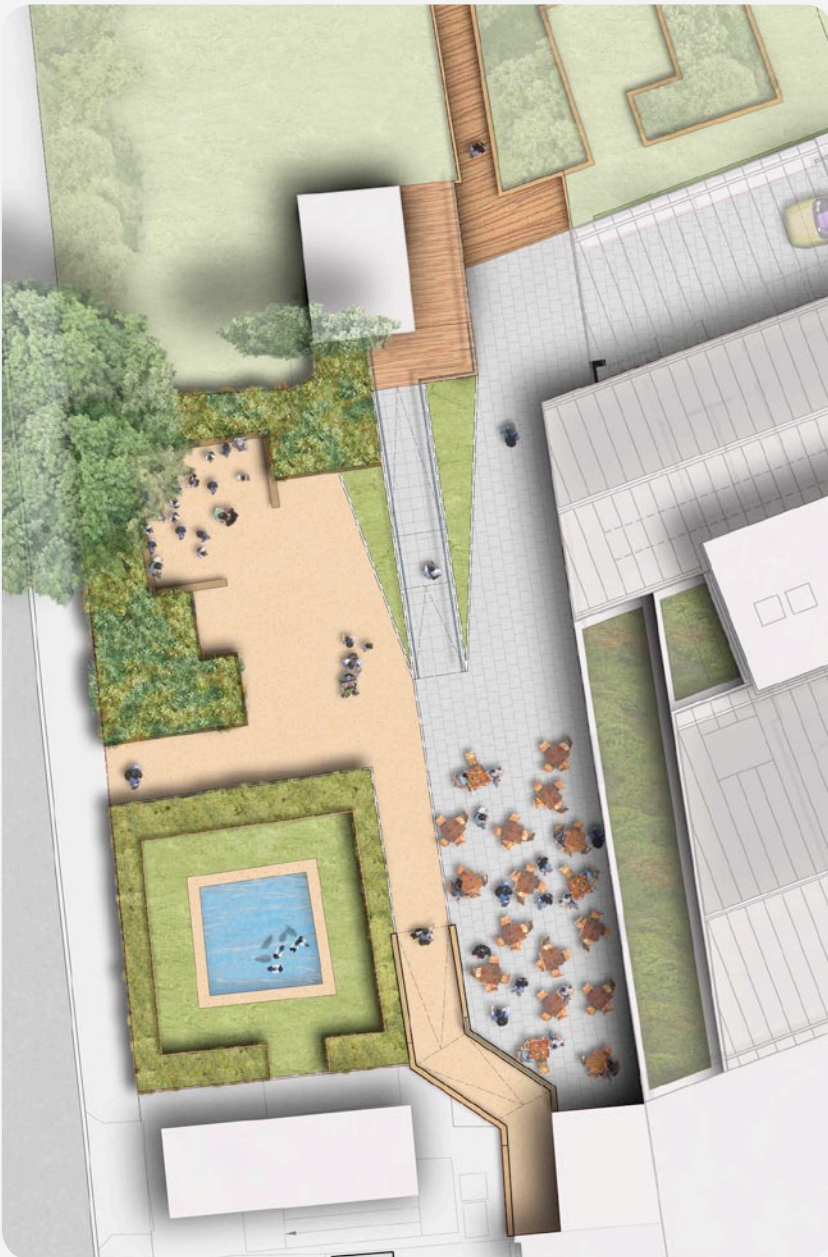


We were appointed by a developer client as landscape architects on this proposed community facility located adjacent to Vauxhall Pleasure Gardens. Our commission was to provide landscape architect's information to support a detailed Planning submission, then to produce full landscape Tender and Construction packages of information to enable its construction.

The site formed part of the main body of the City Farm and its associated allotments. The City Farm's proposal was to refurbish and extend the existing building and repurpose it at the ground floor level to provide a local cafe. Our remit was to provide a suitable landscape setting for the cafe and to stitch this into the existing farm and allotments. The City Farm had a list of requirements which needed to be incorporated into our proposal and their sign off was required at each stage.

Our scope was to provide an external cafe seating area, incorporate a duck pond and provide a seated external classroom space where school children could gather. All surfaces within this site needed to be Building Control Part M compliant. This was particularly challenging as the cafe area is significantly lower than its surrounding context.

Careful attention was given to retaining the existing levels within the vicinity of a number of trees at the north west corner of the site. It was important that these trees survived the development process and continued to thrive.



Client
St James Group

Architect
Base Associates

15 Iliffe Yard | London | SE17 3QA | 020 7277 1035 | mail@davisla.com | www.davisla.com

Davis Landscape Architecture Limited
Registered in England and Wales
Company Number 07018870
VAT Registration Number 979558439

**Landscape
Institute**
Registered practice

Davis
Landscape Architecture