

Liverpool Grove Walworth, Southwark, London

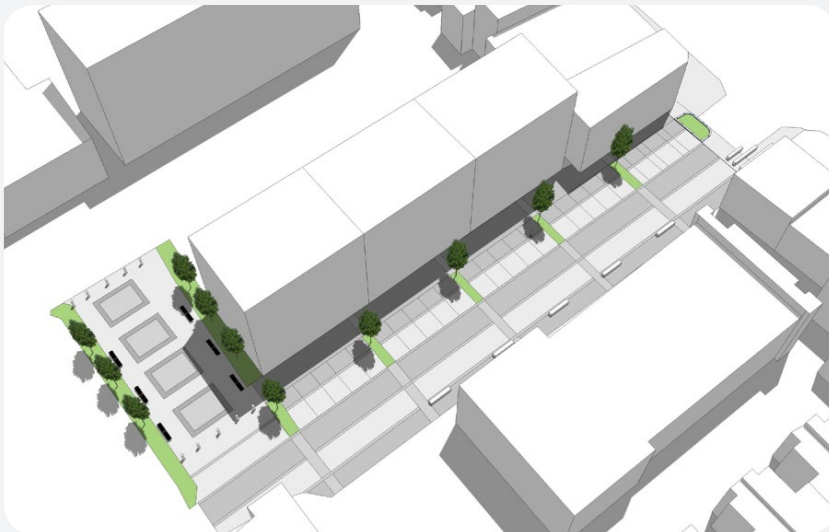


We offered our services to the Walworth Society to analyse and assess whether Liverpool Grove would be a suitable road to adopt the principals of shared space. Our analysis considered it was suitable, we then proceeded to develop a proposal to this end.

St Peter's Church (Grade 1 listed building) is located at one end of the section of Liverpool Grove which abuts the Walworth Road. The buildings either side of the street frame the view of this church from the Walworth Road. As the street has a wide building to building frontage the introduction of appropriate tree planting is possible whilst retaining the attractive vista of the church. Due to the street not being a through route to motor vehicles we concluded it to be suitable for a shared space due to the very low volumes of slow moving traffic.

Our proposals suggest transforming this space from a regular residential road, with the standard footpaths and carriageway arrangement, to a linear square. To achieve this end the existing car parking layout has been reconfigured to free up some valuable space for this square. This allowed us to introduce new trees, areas of planting and robust benches (which help to control unallocated parking). In addition, the ground plane has been considered and a single paved surface and this treatment runs from building frontage to building frontage.

Our proposal has been presented to the relevant interested parties of this space and were used to generate further discussion.



Client
Walworth Society

15 Iliffe Yard | London | SE17 3QA | 020 7277 1035 | mail@davisla.com | www.davisla.com

Davis Landscape Architecture Limited
Registered in England and Wales
Company Number 07018870
VAT Registration Number 979558439

**Landscape
Institute**
Registered practice

Davis
Landscape Architecture