

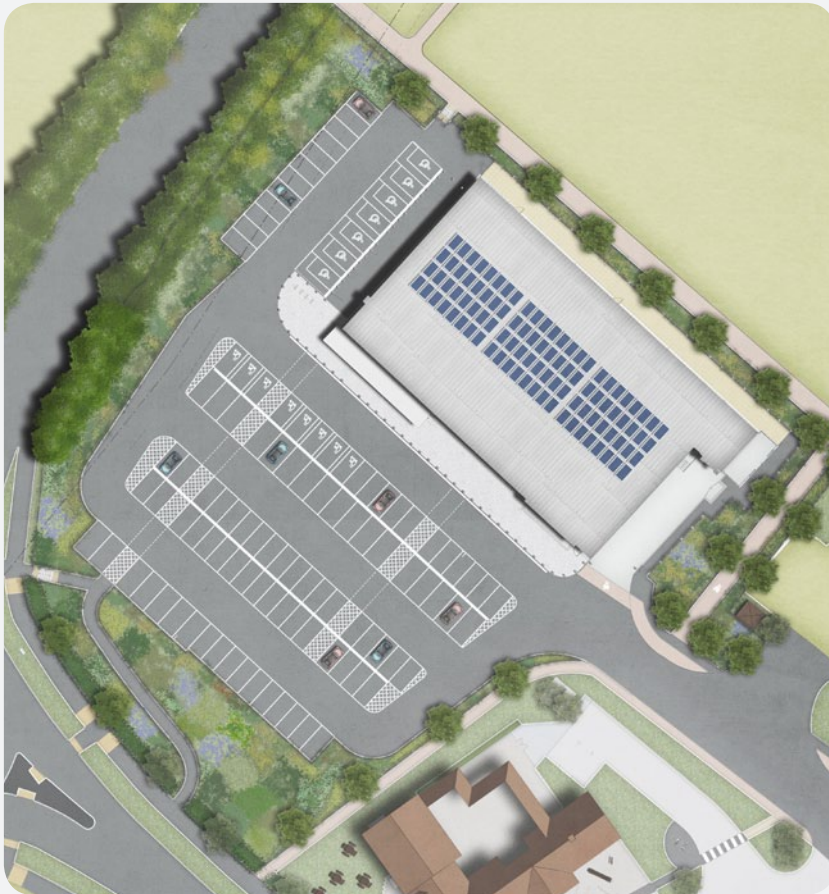
Aldi Store Witham, Essex

We were initially appointed by a developer client to provide them with information to satisfy landscape related reserved matters. Once satisfied, we produced full tender and construction landscape packages of drawn and written information to enable the procurement and construction of the external works for this new build retail store in Essex.

This development plot already had outline planning consent for a retail unit to be constructed in this location. We worked closely with the architects and client to develop a scheme that satisfied the prescriptive requirements of the local planning department whilst providing the end user with a building and setting that satisfied their needs.

The existing treed edge to the north west corner of the site was particularly sensitive and the planning department were very keen that this should be preserved and extended. The end users required that the site edges should provide views of the store from passing vehicles. A compromise was struck between these two apparently conflicting requirements to the satisfaction of the planners and the end user.

DDA compliant access was required throughout the site. This included an access path and stepped access from the existing footway, to the south west of the plot, connecting to the pedestrian route across the car parking area. Due to the significant level change at this corner of the plot the ramped access cut diagonally across a swathe of planting so it could gain an appropriate length to comply with Building Regulations - Part M.



Client
Aldi Stores Ltd

Client representative
Churchmanor Estates Co. Plc.

Architect
BCR Architects

15 Iliffe Yard | London | SE17 3QA | 020 7277 1035 | mail@davisla.com | www.davisla.com

Davis Landscape Architecture Limited
Registered in England and Wales
Company Number 07018870
VAT Registration Number 979558439

**Landscape
Institute**
Registered practice

Davis
Landscape Architecture