

The Oaks Acton, West London

Our developer client appointed us as landscape architects on this proposed 144 residential units, 5,000m² commercial space and 2,444m² refurbished retail unit mixed use development located in West London. Our scope was to prepare landscape architect's information to support detailed Planning submission, including an Open Spaces assessment of the adjacent Burial Grounds.

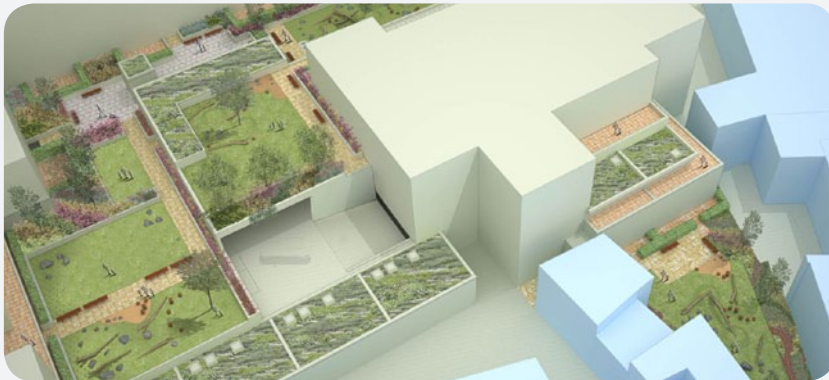
The site is located at the heart of Acton town centre and is intended to provide improved shopping facilities at ground level and significant housing above. This development is part of the continued planned regeneration of this area.

At ground level, our landscape design addressed the proposed buildings interface with the existing urban context. The needs of deliveries, commercial unit access and pedestrian access were all considered within our landscape design. The banding within the ground floor paving pattern responds to the elevational treatment of the building, providing a suitable context in which the building is to be located.

Our landscape architect's second and third floor landscape design responds to the needs of the adjacent proposed residential units. Enclosed private patios are dedicated to all adjacent residential units. Communal spaces are proposed for use of all residents at second and third floors. These include hard and soft landscape elements and three informal play areas split between two levels. In locations where roofs are not publicly accessible, Sedum green roofs were proposed. Both second and third floor landscapes are located over podium decks.

Client
Acton Regeneration Co.

Architect
StockWool



15 Iliffe Yard | London | SE17 3QA | 020 7277 1035 | mail@davisla.com | www.davisla.com

Davis Landscape Architecture Limited
Registered in England and Wales
Company Number 07018870
VAT Registration Number 979558439

**Landscape
Institute**
Registered practice

Davis
Landscape Architecture