



2020

Davis
Landscape Architecture

Contents

This is an interactive document. Please click on any of the icons below to take you directly to any section of our brochure. Use the icons at the bottom of each page to return to this page. If you would like more information on any project contained within this document please click any of the images.

Cover image
Silver Works, Colindale, Brent
Linear park with play to rear of
residential development

Davis
Landscape Architecture

Company Overview & Collaborations

We are a design led London based practice that prides itself on the delivery of landscape schemes that satisfy the aesthetic and functional requirements of our clients and all members of the design team.



Established in 2009, we are an enthusiastic, creative and dynamic landscape architectural practice. We pride ourselves on creating unique, interesting and durable solutions for each project.

We are experienced in the landscape design of residential communities, education facilities and commercial and business park developments. We have a diverse range of skills, interests and areas of expertise.

We are able to deliver a comprehensive range of project information including feasibility studies, information to support planning submissions, full tender and construction information, monitoring on site works and contract administration.

Our outputs include rendered master plans, rendered visualisations, landscape design statements, technical construction packages of information, NBS specifications, landscape management plans, Landscape and Visual Impact Assessments (LVIA) and various reports.

Clients

Acton Regeneration Group
Acorn Property Group
Aitch Group
Bayview Homes Southern
Be First
Brent Housing Partnership
Caerus Developments
Churchmanor Estates
CJ O'Shea
Cosmur Construction
Delancey
Ellmer Construction
Galliard Homes
Hanover HA
Inner London Group
ISG
J Coffey Construction
Jerram Falkus
Jones Lang Lasalle
London & Quadrant
LB Brent
LB Barking & Dagenham
LB Havering
Lewisham Homes

Mace Group
Mizen Design Build
Noble House Properties
NU Living
Reichmann Properties
RG Carter
Silk Group
St James Group
St John's College Cambridge
Swan Housing
Total Protection (Landscape)
Thomas Sinden
Turnstone Estates
Vinci Construction

Consultants

Aecom
Allies & Morrison
Anshen & Allen Architects
Arcadis
Assael Architecture
Baily Garner
Barton Willmore
Base Associates
BCR Architects
BM3
Bowman Riley
Bryden Wood
Buckley Grey Yeoman
Castons
Clive Sall Architecture
Davies Maguire
Dexter Moren Architects
DGA Architects
DP9
DunnettCraven Architects
Ellis & Moore
EPR Architects
FBM Architects
GML Architects

Gpad Architect
Hoare Lea
Iceni Projects
Jenkins & Potter
JM Architect
LSI Architects
Make Architects
MLM Group
Montague Evans
Osel Architecture
PCKO Architects
PRP Architects
PTE Architects
PRP
Ramboll
Reddy Architecture
Rolfe Judd
RPS Group
Savills
StockWool
Walsh Associates
Waugh Thistleton Architects
Wimshurst Pelleriti
WSP

Residential Communities



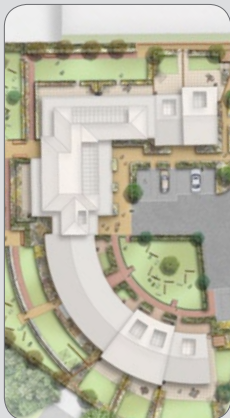
We believe design has an important role in the creation of a cohesive, sustainable society. We aim to create safe, beautiful spaces which encourage regular encounters between members of a locality, helping to foster strong engaged communities.

We believe the quality of public realm and publicly accessible spaces have an impact on the overall quality of our lives. We aim to design inclusive spaces that offer opportunity for all and encourage human interaction outside that of the usual day-to-day encounter.

We are experienced in the design of 'Home Zone' type environments. These can help to promote pedestrian friendly, walkable neighbourhoods which make door step play for children a real possibility.

The considered design of communal parks and play areas, vehicular and pedestrian networks and defensible private space all help to create a pleasant, functioning community.

We fully understand the functional requirements of residential communities. We design landscape space so the requirements of various service and delivery vehicles are integrated elegantly into our final landscape design.



Mill Farm, Hanworth, Richmond



Tyson Road, Forest Hill, Lewisham



Grange Road, Walthamstow



Gillan Court, Grove Park, Lewisham
Courtyard garden amenity space
with play equipment, car parking
and patios.



Kingsbridge, Gascoigne Estate, Barking
New adoptable street with on street parking and tree planting. Private gardens to the rear.

Davis
Landscape Architecture

Podium Deck Landscapes & Roof Gardens

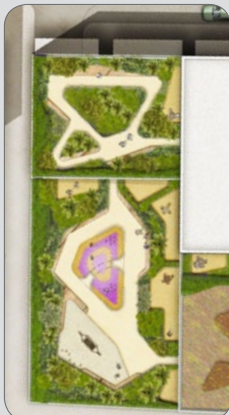


In our urban environments roof gardens and podium deck landscapes are a valuable resource. These spaces can realise the full potential of a development site by providing additional amenity space and a valuable habitat for wildlife.

As a practice we are very experienced in the detailed design of all forms of podium deck landscape build ups. We understand the opportunities and design constraints implicit in the different types of podium deck drainage systems.

The careful design of extensive and intensive roof landscapes are critical to their successful implementation. We therefore work closely with other consultants throughout the design process to ensure all elements included within the podium deck/ roof landscape are coordinated.

By working closely with other consultants at an early stage of a project, our landscape architects can better understand the functional elements required within the landscape layer. These can then be integrated into our proposal from the start, thus avoiding costly and poorly considered afterthoughts.



Edgware Road, Colindale, Brent



Young Street, Kensington & Chelsea



St Luke's, Canning Town



Marine Wharf East, Bermondsey, Southwark
Communal roof courtyard
garden with seating, planting
and play features.

Davis
Landscape Architecture



Marine Plaza, Southend on Sea
Public realm podium deck
landscape with public lawn, seating
and views across the sea.

Commercial Landscape Design



The landscape zones surrounding commercial buildings are an often overlooked opportunity. They can provide spaces for branding, a suitable setting for the building and approaches suitable to the building's function. These can be incorporated with the functional requirements of the building.

As a practice we have significant experience at all stages of the design process for landscapes associated with a wide variety of commercial type buildings.

We understand the possible functional requirements of external spaces associated with these types of building. These are discussed and agreed at an early stage of the design process, helping to avoid abortive work at later stages. In addition, costly and poorly integrated afterthoughts can be avoided.

We are able to make suggestions on branding opportunities within the external environment. This may be associated with signage, colour or the placement of sculpture within the landscape zone.

We are experienced in defining strategic wayfinding strategies by using a clear hierarchy of materials. This ensures the landscape is legible and a suitable sense of arrival can be provided.



Vintry & Mercer Hotel, Mansion House



East Village, Stratford, Newham



Brunel House, Portsmouth



Robinson Building, Chesterford Research Park, Essex
A shared courtyard breakout space for this shared research facility building.



Maritime House, Clapham, Lambeth
Our visualisation the front entrance area to a commercial office space within a conservation area.

Play, Learning & School Environments



Play: “Engage in activity for enjoyment and recreation rather than a serious or practical purpose.” Programmed and unprogrammed play spaces should be integrated into the landscape where possible and designed to encourage and challenge children’s imagination.

With input from other consultants we are able to use SPG ‘Providing for Children and Young People’s Play and Informal Recreation’ to advise our clients on appropriate provisions of play required for any given residential development.

When accommodated within the public realm we believe play spaces should be seamlessly integrated, not inserted as an afterthought or a stand alone item.

The careful selection of plant material within play spaces can provide physical structure to define the zone and help to provide opportunities for children to interact directly with nature.

The integration of natural elements within play spaces enable young children to better understand the qualities of different materials and encourages them to engage their imagination in creative ways.

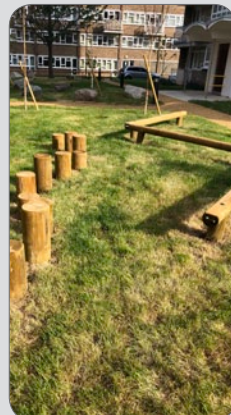
Play and spatial arrangement are carefully considered when designing school environments. Circulation, active and passive zones are all key to creating successful school landscapes.



Gordon Infant School, Ilford



Westbury Estate, Clapham, Lambeth



Summit Court, Kilburn, Brent



Silver Works, Colindale, Brent
Communal garden with linear
play area for use by residents and
members of the public.



London Road, Wembley, Brent

New streets to adoptable standards with on street parking. Play areas integrated into the public realm.
Podium deck landscape with private patios

Davis
Landscape Architecture

Hard Landscape & Materials



Our intention is to design spaces which are functional, inclusive, durable and visually pleasing. Key to this is the selection of materials which are robust, appropriate for their use and within the budget defined by our clients.

As an integral part of the design of public spaces we believe opportunities for social interaction are key to healthy communities. The provision of open and private seating opportunities and play are desirable to achieve this end.

In public spaces we would encourage the integration of flexible, programmable spaces. These are able to accommodate a variety of activities through time and have the ability to bring life and activity to the public realm.

By considering the needs of the end user at the outset of the design process we aim to create inclusive spaces which cater for the broadest spectrum of society.

We intend to design in a legible, clutter free manner. This allows for ease of movement, clear wayfinding and helps to provide an aesthetically pleasing environment.

We aim to source materials that have been produced in an environmentally sustainable manner. The intention is to have a minimal negative impact on our environment, ensuring future generations inherit a sustainable planet.



Ravenscourt House, Hammersmith



Crescent Lane, Clapham, Lambeth



Maurice Wilkes Building, Cambridge



London Wall Place, City of London
Detailed design of bespoke
street furniture, edgings
and water feature.

Davis
Landscape Architecture



RHDA, Colindale, Barnet
A functional Part M compliant
pedestrian entrance to this new training
facility for the Metropolitan Police.

Davis
Landscape Architecture

Horticulture & Planting



Plants add a unique and ever changing dynamic to a landscape scheme. As the seasons pass they can change shape and colour, flower and emit fragrance. They provide a sense of time in the form of a living tapestry within our landscape design.

With a qualified horticulturist employed within our practice we design schemes that are suited to their local environment, are water efficient and are also able to provide habitat and food for wildlife.

Planting may be used as a dynamic element within hard landscape structures to provide visually pleasing living forms, seasonal drama and contact with nature.

Planting can also provide benefits for the physical environment by cooling and purifying the air, cleaning surface water run off, attenuating noise, providing shade and stabilising banks.

Our landscape architects are able to provide comprehensive maintenance plans to ensure our schemes continue to be healthy and improve with time.



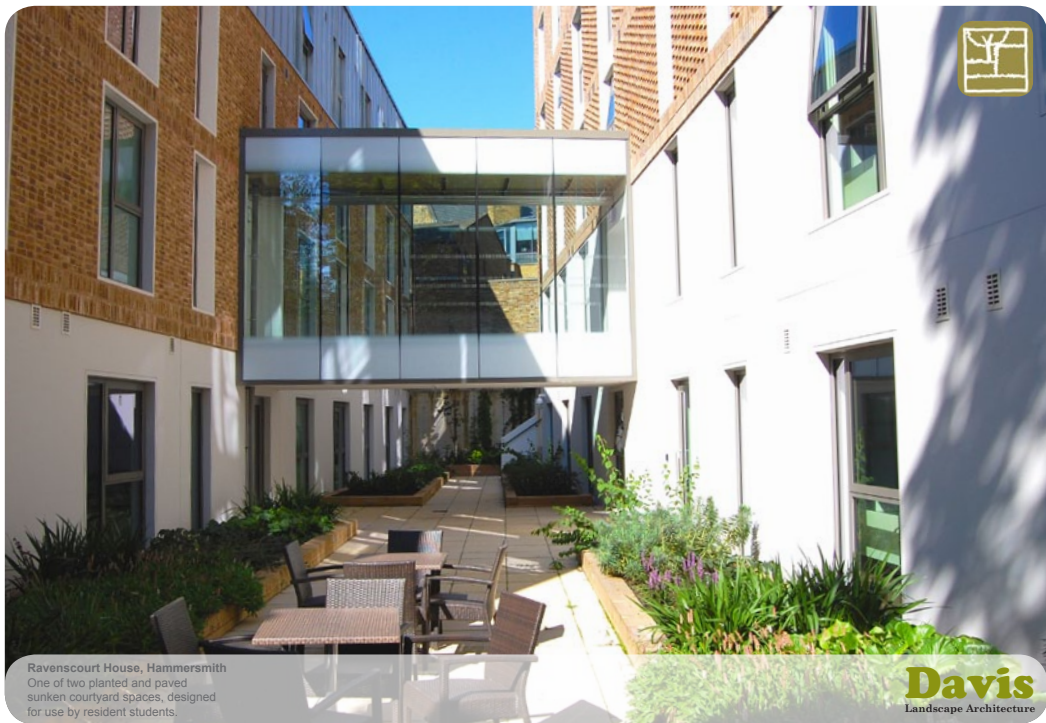
Robinson Building, Essex



Avenue School, Manor Park, Newham



Silver Works, Colindale, Brent



Ravenscourt House, Hammersmith
One of two planted and paved
sunken courtyard spaces, designed
for use by resident students.



Pieris Place, Bulphan, Essex
Landscape masterplan with
access road, parking, private
gardens & amenity.

Water Issues & SUDS



With climate change and the unpredictable nature of weather it is becoming increasingly important to manage water in an intelligent and sustainable manner. Sensitively managed water run off can provide opportunities for the creation of aquatic wildlife habitats.

We understand the principles and design limitations of the various Sustainable Urban Drainage Systems (SUDS) which can be used for the management and collection of surface water run off. These may be a simple planted ditch or swale, permeable paving with appropriate sub base or an ornamental rain garden water feature.

With our in house horticultural expertise we can integrate appropriate plant material with a SUDS drainage strategy to achieve an attractive, functional and wildlife friendly outcome.

We understand how SUDS techniques can be applied to achieve the desired BREEAM and/ or Code for Sustainable Homes outcome.

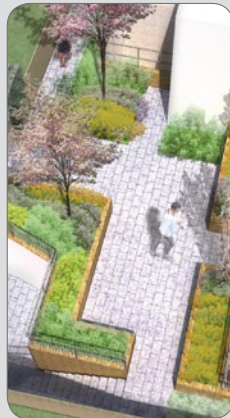
Green, brown or blue roofs may be used to attenuate surface water run off into the drainage system. This has the added potential benefit of providing valuable wildlife habitats.



Star Lane Ph1, Great Wakering, Essex



Star Lane Ph 2, Great Wakering, Essex



Chadwell Street, Islington



Maurice Wilkes Building, Cambridge
Car parking bays with permeable paving
which discharge surface water run off into
the adjacent planted swale feature.



Stanley School, Teddington
Remodelled courtyard space,
retaining existing trees and
incorporating permeable paving.

Ecology & Habitat Preservation



With the ever increasing man made pressures on the habitats of our native flora and fauna, there is now a growing awareness of the importance of preserving existing habitats and the incorporation of measures to help offset the loss of habitat associated with a new development.

We aim to design in a sustainable manner. This includes the incorporation of design elements that protect and enhance our ecology and minimises the impact of development on our natural resources.

Encouraging wildlife into our external spaces can provide children with a valuable educational resource. Working with ecologists we can advise on strategic locations for bird, bat and bug boxes.

We are able to integrate native plant species with ornamental varieties to provide visually pleasing planting schemes which are ecologically biodiverse and beneficial.

We have a good understanding of the BREEAM and Code for Sustainable Homes process. As a consequence we are able to advise our clients on where relevant credits are likely to be available.



Gillan Court, Grove Park, Lewisham



Chesterford Research Park, Science Village



Harper Road, Borough, Southwark



Chelmsford Business Park, Plots K & L, Essex
Two new commercial business premises located adjacent to an archeological site and TPO trees and woodland.

Davis
Landscape Architecture



Tyson Road, Forest Hill, Lewisham
Residential development on a sloping site retaining as many existing trees as possible.

Other Projects

Below is a selection of other notable projects that we have delivered, which do not appear elsewhere in this document.



Vauxhall City Farm, Lambeth



Watts Grove, Tower Hamlets



Ruckholt Road, Leytonstone



Wapping, Tower Hamlets



Belsize Park, Camden



Bow Road II, Tower Hamlets



Knowles House, Brent



Gascoigne West, Barking



Gwynne Road, Battersea



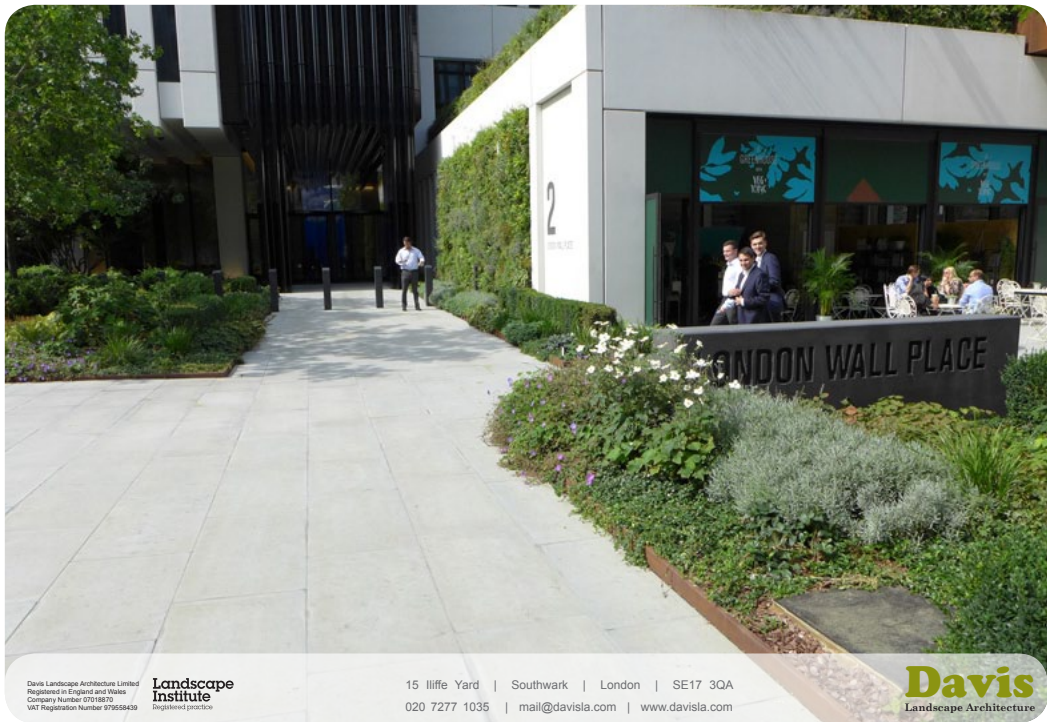
Albvyns Close, Havering



Iverson Road, Hampstead



Former Honda Site, Ealing



Davis Landscape Architecture Limited
Registered in England and Wales
Company Number 07018870
VAT Registration Number 979558439

**Landscape
Institute**
Design-led practice

15 Iliffe Yard | Southwark | London | SE17 3QA
020 7277 1035 | mail@davisla.com | www.davisla.com

Davis
Landscape Architecture