

Heylyn Square Tower Hamlets, London



We were appointed by a design and build contractor client to prepare information to discharge landscape architect's planning conditions, tender information, then a full construction package of information for this mixed use development.

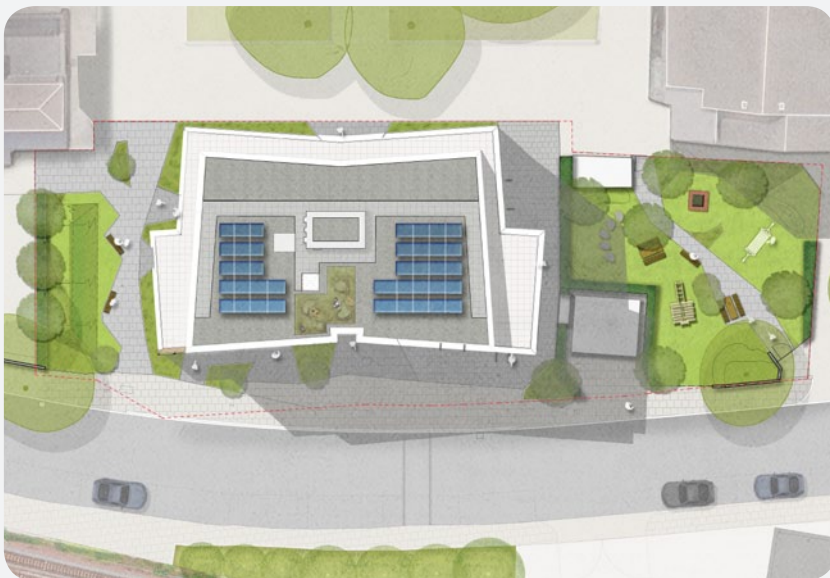
This 1250msq plot is located on a brown field site, previously occupied by a parade of shops and their associated parking. There is one notable tree within the plot boundary. This plot sits at the northern edge of a housing estate, with Malmesbury Road to its north.

The roof of the building accommodates the required photovoltaic panels, service access routes and an area of biodiverse planting.

To the west of the building a new play space has been created. This contains a number of items of play equipment, picnic tables, areas of grass and planting. At the north west corner of this space a semi mature trees has been retained. Levels surrounding this tree were carefully considered so as to ensure its long term health.

To the east of the building a new thoroughfare has been created. Along this route new benches and planting have been installed. To the west of the new footpath a sustainable urban drainage system (SUDS) feature has been created. This will intercept all the water from the adjacent areas of hardstanding.

The levels to the north of the building were carefully considered and developed to the satisfaction of the London Borough of Tower Hamlets. All footpaths were Part M compliant.



Client
London Borough of Tower Hamlets

Contractor
Formation Design and Build

Architect
Delta Architects

15 Iliffe Yard | London | SE17 3QA | 020 7277 1035 | mail@davisla.com | www.davisla.com

Davis Landscape Architecture Limited
Registered in England and Wales
Company Number 07018870
VAT Registration Number 979558439

**Landscape
Institute**
Registered practice

Davis
Landscape Architecture