

## Sidney Sussex Building Chesterford Research Park

We were appointed by a fund manager client as consultant landscape architects on this new build office and research facility located on a 1.32ha brownfield plot. Our scope was to provide landscape architect's information from planning stage to the completion of the project.

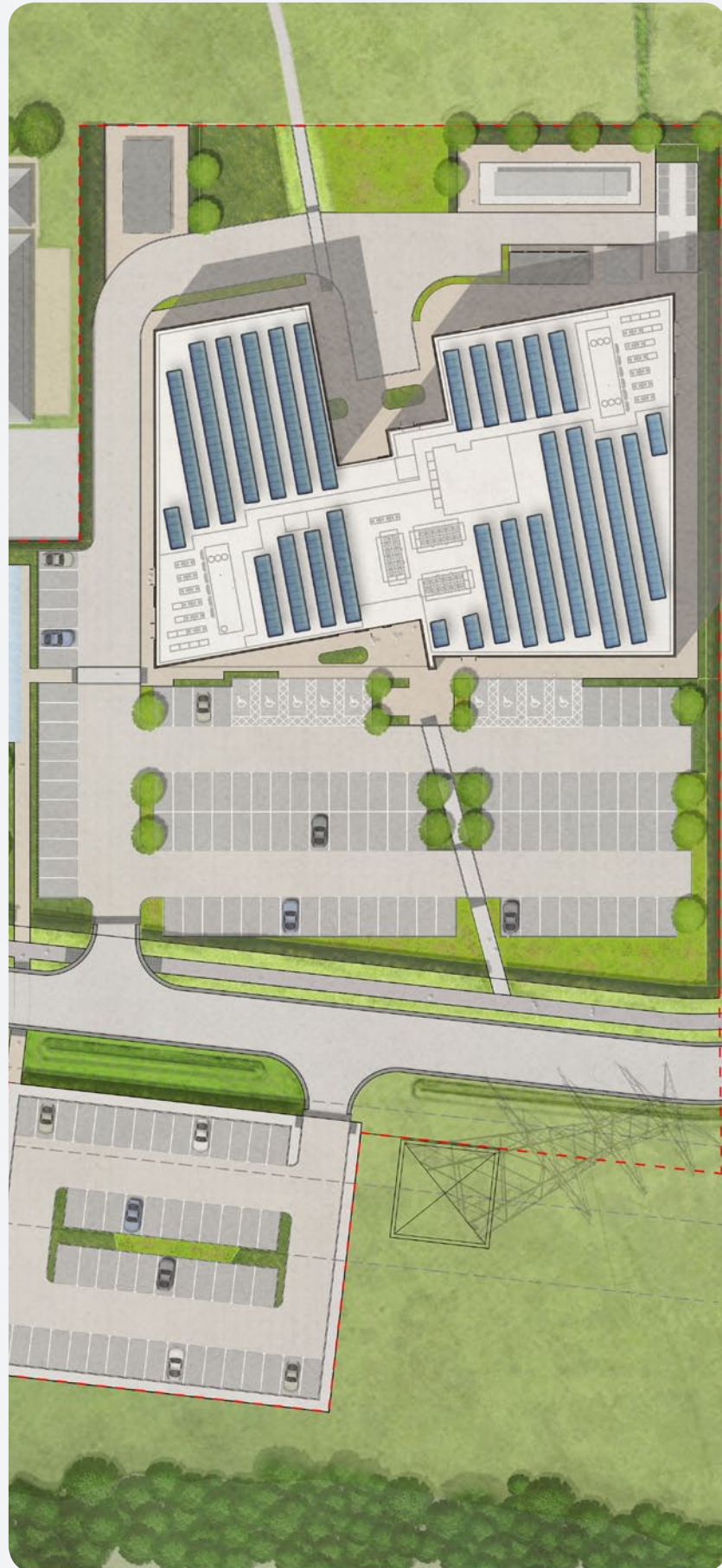
The strategic landscape design for this development needed to consider interfacing with existing levels, vehicular circulation, car and cycle parking, pedestrian circulation, wayfinding and Part M compliance.

The car parking has been located to the front of this facility, facing the park ring road. Service deliveries and mechanical plant are located at the rear of the building, facing the arboretum. To the front and rear of the building a break out space has been integrated in the design.

The palette of hard landscape materials were carefully selected to ensure the external works complemented that of the built form.

Planting has been used throughout the site to provide structure, enclosure, screening, opportunities for wildlife and joy. The planting to all areas has been carefully selected so as to thrive in their proposed locations. The types of vegetation are varied and are designed to provide interest all year round.

In all location native and/ or wildlife friendly planting has been specified. This includes Blackthorn and Wild Privet hedging to the perimeter of the plot and the planting of predominantly native tree species through out. Complimenting this is our predominantly native ornamental ground cover mix.



### Client

Aviva Investors/ Churchmanor Estates Co. Plc.

### Contractor

Glencar Construction

### Architect

BCR Infinity Architects

15 Iliffe Yard | London | SE17 3QA | 020 7277 1035 | mail@davisla.com | www.davisla.com

Davis Landscape Architecture Limited  
Registered in England and Wales  
Company Number 07018870  
VAT Registration Number 979558439

**Landscape  
Institute**  
Registered practice

**Davis**  
Landscape Architecture