



2025

Davis
Landscape Architecture

Contents

This is an interactive document. Please click on any of the icons below to take you directly to the desired section of our brochure. Use the icons at the bottom of each page within this document to return to this page. If you would like more information on any project please click any of the images.

Cover image
Bancroft & Wickford Street, Tower Hamlets
Linear park with play between existing and new dwellings.

Davis
Landscape Architecture

Company Overview & Collaborations

We are a landscape architectural practice that prides itself on the delivery of landscape schemes that are attractive, coordinated and satisfy functional requirements of the design team.



Established in 2009, we are an enthusiastic and creative landscape architectural practice. We pride ourselves on creating unique and durable solutions for each project.

We are experienced in the landscape design of residential communities, commercial developments and education facilities. As a practice we have a diverse range of skills, interests and areas of expertise.

We are able to provide a comprehensive range of services within our discipline. This includes information to support feasibility studies, information to support planning submissions, full tender and construction information and providing support during the construction phase of the project.

Our outputs include rendered master plans and visualisations, landscape design statements, technical construction packages of information, NBS specifications, landscape management plans, Urban Greening Factor calculations and Landscape and Visual Impact Assessments (LVIA).

Our Clients

Aitich Group
Aviva Life and Pension
Be First
Brent Housing Partnership
Caerus Developments
Churchmanor Estates
CJ O'Shea
Delancey
Ellmer Construction
Engie
Formation Design & Build
Galliard Homes
Glencar Construction
Hill Partnership
Hollis Global
ISG
J Coffey Construction
Jerram Falkus
Jones Lang Lasalle
Kind & Co.
London & Quadrant
London Borough of Brent
London Borough of Barking & Dagenham
London Borough of Havering
London Borough of Tower Hamlets
Lewisham Homes
Mace Group
NU Living
Oakwood Building Contractors
Reichmann Properties
RG Carter
Southern Housing
St James Group
St John's College Cambridge
Swan Housing
Tendering District Council
Thomas Sinden
Turnstone Estates
Vinci

Consultant Collaborations

A&Q Partnership
Aecom
Allies & Morrison
Arcadis
Asteer Planning
ATP Group
Baily Garner
BCR Infinity Architects
Bryden Wood
BPTW
Buckley Grey Yeoman
Castons
Chetwoods
DGA Architects
DHA Planning
DP9
Dunnett Craven Architects
EPR Architects
FBM Architects
Fletcher Priest Architects
Gpad Architect
Hoare Lea
Holloway Studio
Iceni Projects
JM Architect
LSI Architects
Make Architects
Montague Evans
Osel Architecture
Pellings
PRP Architects
PTE Architects
Quod
Ramboll
Reddy Architecture
Rivington Street Studio
Rolfe Judd
RPS Group
Savills
Stiff + Trevillion
StockWool
Walsh Associates
Waugh Thistleton Architects
Wimshurst Pelleriti
WSP

Residential Communities

We believe design has an important role in the creation of a cohesive, sustainable society. We aim to create safe, beautiful spaces which encourage regular encounters between members of a locality, helping to foster strong and engaged communities.



We believe the quality of public realm and publicly accessible spaces have an impact on the overall quality of our lives. We aim to design inclusive spaces that offer opportunity for all and encourage human interaction outside that of the usual day-to-day encounter.

We are experienced in the design of 'Home Zone' type environments. These can help to promote pedestrian friendly, walkable neighbourhoods which make door step play for children a real possibility.

The considered design of communal parks and play areas, vehicular and pedestrian networks and defensible private space all help to create a pleasant, functioning community.

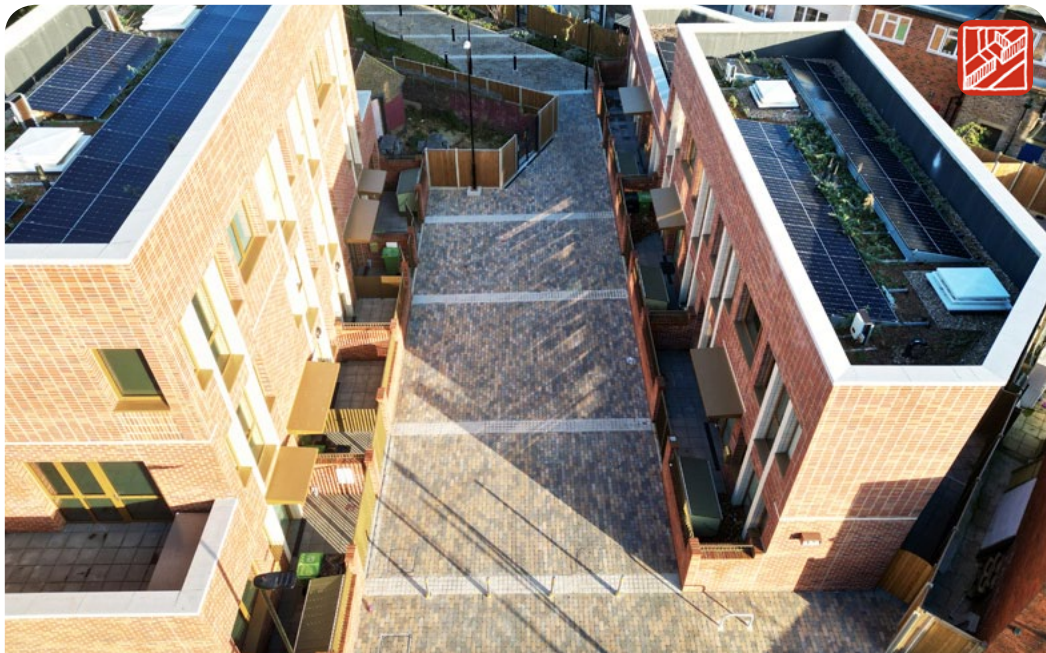
We fully understand the functional requirements of residential communities. We design landscape space so the requirements of various service and delivery vehicles are integrated elegantly into our final landscape design.



Gillan Court, Grove Park, Lewisham



Tyson Road, Forest Hill, Lewisham



Rowan Court, Seven Sisters, Haringey
Public realm between two newly built
residential blocks, as part of a wider
redevelopment of the area.



Bancroft & Wickford Street, Tower Hamlets
New linear park with elements of play, seating and planting, located between existing and newly built residential blocks.

Podium Deck Landscapes & Roof Gardens



In our urban environments roof gardens and podium deck landscapes are a valuable resource. These spaces can realise the full potential of a development site by providing additional amenity space and a valuable habitat for wildlife.

As a practice we are very experienced in the detailed design of all forms of podium deck landscape build ups. We understand the opportunities and design constraints implicit in the different types of podium deck drainage systems.

The careful design of extensive and intensive roof landscapes are critical to their successful implementation. We therefore work closely with other consultants throughout the design process to ensure all elements included within the podium deck/ roof landscape are coordinated.

By working closely with other consultants at an early stage of a project, our landscape architects can better understand the functional elements required within the landscape layer. These can then be integrated into our proposal from the start, thus avoiding costly and poorly considered afterthoughts.

We are experienced in preparing packages of landscape related information for submitting to the Building Safety Regulator for higher-risk buildings, as required by the Building Safety Act.



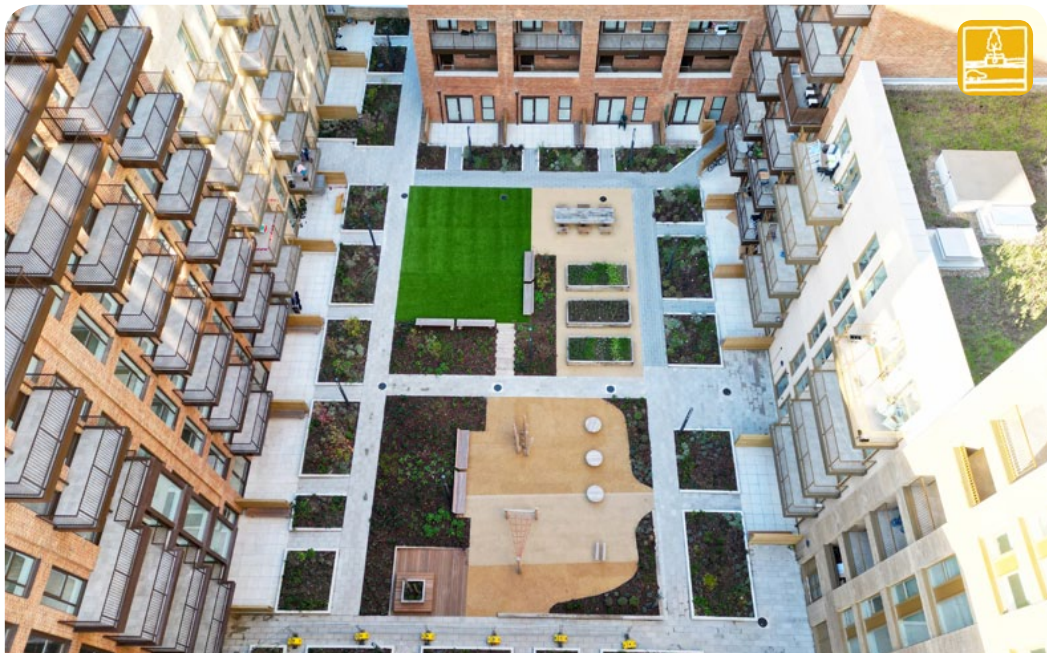
Young Street, Kensington & Chelsea



Chocolate Factory (Block E2), Haringey



Marine Wharf East, Bermondsey, Southwark
Communal roof courtyard
garden with seating, planting
and play features.



Aylesbury S05 & S06, Albany Road, Southwark
Shared amenity podium deck landscape with play
space, seating, private patios and growing spaces.

Commercial Landscape Design



The landscape zones surrounding commercial buildings are an often overlooked opportunity. These spaces can provide opportunities for branding, break out spaces for the occupants of the building and an enhanced setting for the building. These can be incorporated with the functional requirements of the building.

As a practice we have significant experience at all stages of the design process for landscapes associated with a wide variety of commercial type buildings.

We understand the possible functional requirements of external spaces associated with these types of building. These are discussed and agreed at an early stage of the design process, helping to avoid abortive work at later stages. In addition, costly and poorly integrated afterthoughts can be avoided.

We are able to make suggestions on branding opportunities within the external environment. This may be associated with signage, colour or the placement of artwork within the landscape zone.

We are experienced in defining strategic wayfinding strategies by using a clear hierarchy of materials. This ensures the landscape is legible and a suitable sense of arrival can be provided.



Building 800, Chesterford Research Park, Little Chesterford, Essex



Vintry & Mercer Hotel, Mansion House



Newnham Building, Chesterford Research Park, Essex
Car parking, pedestrian circulation
and amenity space for this
research facility building.



Maurice Wilkes Building, Cambridge
Main entrance area/ break out space
for a new commercial building
containing office space.

Play, Learning & School Environments



Play: “Engage in activity for enjoyment and recreation rather than a serious or practical purpose.” Programmed and unprogrammed play spaces should be integrated into the landscape where possible and designed to encourage and challenge children’s imagination.

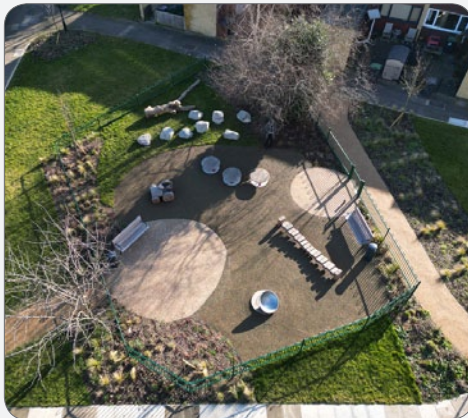
We are able to utilise the SPG ‘Providing for Children and Young People’s Play and Informal Recreation’ to advise our clients on appropriate provisions of play required for any given residential development.

When accommodated within the public realm we believe play spaces should be seamlessly integrated, not inserted as an afterthought or a stand alone item.

The careful selection of plant material within play spaces can provide physical structure to define the zone and help to provide opportunities for children to interact directly with nature.

The integration of natural elements within play spaces enable young children to better understand the qualities of different materials and encourages them to engage their imagination in creative ways.

Play and spatial arrangement are carefully considered when designing school environments. Circulation, active and passive zones are all key to creating successful school landscapes.



Partridge Way, Wood Green, Haringey



Westbury Estate, Clapham, Lambeth



Silver Works, Colindale, Brent
Communal garden with linear
play area for use by residents and
members of the public.



Heylyn Square, Bow, Tower Hamlets
New building with commercial premises at ground floor and residential above. Play space and rain garden flank the new building.

Hard Landscape & Materials



Our intention is to design spaces which are functional, inclusive, durable and visually pleasing. Key to this is the selection of materials which are robust, appropriate for their use and within the budget defined by our clients.

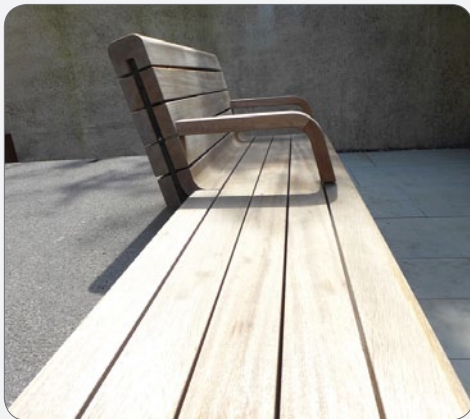
As an integral part of the design of public spaces we believe opportunities for social interaction are key to healthy communities. The provision of open and private seating opportunities and play are desirable to achieve this end.

In public spaces we would encourage the integration of flexible, programmable spaces. These are able to accommodate a variety of activities through time and have the ability to activate the public realm.

By considering the needs of the end user at the outset of the design process we aim to create inclusive spaces which cater for the broadest spectrum of society.

We intend to design in a legible, clutter free manner. This allows for ease of movement, clear wayfinding and helps to provide an aesthetically pleasing environment.

We aim to source materials that have been produced in an environmentally sustainable manner. Our intention is to have a minimal negative impact on our environment, ensuring future generations inherit a sustainable planet.



London Wall Place, City of London



Robinson Building, Little Chesterford



London Square, Tower Hamlets
Detailed design of new public square
located between Royal London Hospital
and Tower Hamlets Town Hall



Maritime House, Clapham
A functional Part M compliant
pedestrian entrance to this multi
occupancy office building.

Horticulture & Planting



Plants add a unique and ever changing dynamic to a landscape scheme. As the seasons pass they can change shape and colour, flower and emit fragrance. They provide a sense of time in the form of a living tapestry within our landscape design.

With a qualified horticulturist employed within our practice we design schemes that are suited to their local environment, are water efficient and are also able to provide habitat and food for wildlife.

Planting may be used as a dynamic element within a hard landscape structures to provide visually pleasing living forms, seasonal drama and contact with nature.

Planting can also provide benefits for the physical environment by cooling and purifying the air, cleaning surface water run off, attenuating noise, providing shade and stabilising banks.

Our landscape architects are able to provide comprehensive maintenance plans to ensure our schemes continue to be healthy and improve with time.

We are well versed in developing planting plans to ensure the mandatory 10 percent biodiversity net gain (BNG) is achieved.



Aylesbury S05 & S06, Albany Road, Southwark



London Square, Tower Hamlets



Silver Works, Colindale, Brent
Linear park with amenity space
including planting and play to rear of
residential development



Pieris Place, Bulphan, Essex
Landscape masterplan with
access road, parking, private
gardens & amenity.

Water Issues & SUDS



With our changing climate and the unpredictable nature of weather, it is becoming increasingly important to manage water in an intelligent and sustainable manner. Sensitively managed water run off can provide opportunities for the creation of aquatic wildlife habitats.

We understand the principles and design limitations of the various Sustainable Urban Drainage Systems (SUDS) which can be used for the management and collection of surface water run off. These may be a simple planted ditch or swale, permeable paving with appropriate sub base or an ornamental rain garden water feature.

With our in house horticultural expertise we can integrate appropriate plant material with a SUDS drainage strategy to achieve an attractive, functional and wildlife friendly outcome.

We understand how SUDS techniques can be applied to achieve the desired BREEAM and/ or nutrient neutrality outcome. Using SUDS, we can work with a civil engineer to provide an elegant solution which achieves the required run off rate for the proposed development.

Green, brown or blue roofs may be used to attenuate surface water run off into the drainage system. This has the added potential benefit of providing valuable rooftop wildlife habitats.



Stanley School, Teddington, Richmond



Star Lane Ph 2, Great Wakering, Essex



Maurice Wilkes Building, Cambridge
Car parking bays with permeable paving
which discharge surface water run off into
the adjacent planted swale feature.



Rowan Court, Seven Sisters, Haringey
Public realm between existing and newly
built dwellings, incorporating permeable
paving.

Ecology & Habitat Preservation



With the ever increasing man made pressures on the habitats of our native flora and fauna, there is now a growing awareness of the importance of preserving existing habitats and the incorporation of measures to help offset the loss of habitat associated with a new development.

We aim to design in a sustainable manner. This includes the incorporation of design elements that protect and enhance our ecology and minimises the impact of development on our natural resources.

Encouraging wildlife into our external spaces can provide children with a valuable educational resource. Working with ecologists we can advise on strategic locations for bird, bat and bug boxes.

We are able to integrate native plant species with ornamental varieties to provide visually pleasing planting schemes which are ecologically biodiverse and beneficial.

We have a good understanding of the BREEAM and Biodiversity Net Gain (BNG) process. We are able to advise our clients on where relevant BREEAM credits are likely to be available. We can advise how existing trees might be retained or planting plans be amended to achieve the required BNG of 10 percent.



Chesterford Research Park, Little Chesterford, Essex



Edith Walk, Great Malvern



Crescent Lane, Clapham, Lambeth
Existing commercial building converted into residential dwellings. External space designed to provide communal amenity. Existing trees retained.



Worsley Bridge Road, Beckenham, Bromley
Residential development on a greenfield site with sports facilities and play. Strategic landscape primarily native species.

Other Projects

Below is a selection of additional projects of note which do not appear elsewhere in this document.



Vauxhall City Farm,
Lambeth



Aldi, Witham



Avenue School, Manor
Park, Newham



East Village Marketing
Suite, Stratford, Newham



RHDA, Colindale, Brent



Edgware Road, Colindale,
Brent



Equinix, Dublin



Gascoigne West, Barking



Harper Road, Borough,
Southwark



Leatherhead Road,
Kingston Upon Thames



Leyton Green Road,
Waltham Forest



London Road, Wembley,
Brent

Your success is our business

Please contact us to see how we can help you bring your vision to life.



Island Garden Cafe, Tower Hamlets
New build cafe with surrounding circulation
and external space in a Grade II listed
garden with mature trees.

Davis Landscape Architecture Limited
Registered in England and Wales
Company Number 07018870
VAT Registration Number 979558439

**Landscape
Institute**
Member of the
Institution of Landscape Architects

15 Iliffe Yard | Southwark | London | SE17 3QA
020 7277 1035 | mail@davisla.com | www.davisla.com

Davis
Landscape Architecture